

# EMORY RadReport

It's what's on the inside that counts!

August, 2009

## In this Issue:

Letter from the Chair	2
Awards & Recognition	2
Advancing Innovations	3
Message from the Vice Chair for Research	3
New Grants	4
Check it Out	5
Resident Introductions	5
Fellow Introductions	6-7
Getting to Know You	8
Striving for Excellence	8
In The Know	9
Get Involved	10-11
New Faces & Appointments	12

## Magazine Drive

Contribute to conservation by bringing in your magazines for use in the radiology waiting rooms. To participate:

1. Remove all personal information from the magazine.
2. Deposit your magazines at the front desk of a radiology waiting area.
3. Repeat each month as your new magazines arrive.

The magazine will be used as needed in our waiting areas to help ease the wait times of our guests.

If you have other thoughts on what you can do to help to make our department better, please send your suggestions to [radiologycomm@emoryhealthcare.org](mailto:radiologycomm@emoryhealthcare.org).

## Integration Success

The partnership of Emory Healthcare and Hospital Corporation of America (HCA) is a successful model that continues to grow. The efforts made by Emory Radiology are evident in the successful integration of the two organizations and in the community, both within the hospital systems and surrounding areas.

Building the relationships between the HCA technical staff and the Emory physicians has been instrumental in the successful integration of the two organizations. A key element is the continued communication between Emory Johns Creek (EJC) CEO, John Quinlivan, and Emory Leadership. Playing a principle role in this is our own Division Director of Community Radiology, Dr. Mary Saltz. Dr. Saltz describes Mr. Quinlivan as "gracious" when detailing her efforts to breakdown silos and implement task forces to ensure patient satisfaction.

Since taking on the role of Division Director in January 2009, Dr. Saltz has implemented divisional meetings, encouraged communication with the technical staff and lead by example in the area of community outreach. In addition to providing a complete gamut of radiology services to EJC and a presence at the Emory Midtown campus, the radiologists have made an effort to interact with the

EJC technical staff through leading Grand Rounds and participating in the departmental meetings. In the greater community, the radiologists have visited referring physicians in their offices, attended Chamber of Commerce meetings and given presentations at local health fairs.

Simultaneously working with the executive leadership of both organizations and the EJC staff leadership, Dr. Saltz has developed relationships at all levels, including Director of Radiology, Aileen Walker, who leads the technical staff. Aileen has witnessed the organizations amalgamate and synchronize their visions and goals. This melding was clearly expressed when Aileen explained the goals of service at EJC,

"We want to show patients that there is a different way to deliver



Emory Johns Creek offers a full line of tertiary radiology services including advanced Interventional Radiology procedures and women's imaging.

health care and we are the entity to do that, with technology and efforts to maximize the patient experience."

With the alignment of the visions and the staff and faculty relationships, Community Radiology looks to the future with plans to expand the offerings of Interventional Radiology, and as put by Dr. Saltz, "integrate into the medical community of the greater Atlanta metropolitan area and beyond."

- Monica Salama  
Communications Manager

## What is Community Radiology?

At Emory we take pride in the advanced level of specialized care that is offered at our many locations throughout the Atlanta metro area. Within radiology all of our physicians are fellowship trained, which composes the various divisions of our department. Community Radiology is unlike our other divisions, such as Abdominal Imaging or Neuroradiology, which clearly define their area of expertise. While all of our community radiologists are fellowship trained, they are not neatly grouped into their respective divisions. This is a full service department that extends Emory quality services beyond the perimeter. At Emory, Community Radiology is a collaborative group of sub-specialized radiologists who provide expertise for all areas of radiology.



The physicians and staff work very closely to continually improve the patient experience.

# Letter from the Chair

Dear Colleagues,

This very full issue of Rad Report reflects the growth in breadth and depth of our Department of Radiology in all of our mission areas. I am grateful to each of you for your contributions and wish to also recognize our now-complete team of Vice Chairs who are vital to these arenas.

Congratulations to our Top Docs, who deliver the finest care and have been recognized by their peers for doing so. As we continue to both expand our clinical services and to enhance the patient and family experience at Emory, our clinical operations and quality initiatives must work hand-in-hand. This requires teamwork. And, we must all lead by example in going that extra mile to ensure that the patient

comes first. Vice Chairs Bill Torres, M.D. (Clinical Affairs) and Kimberly Applegate, M.D. (Quality and Safety) are working as a team to move us closer to the ideal patient experience (See Dr. Applegate's new Quality Corner feature for tips on what you can do to make your area safer).

Our new residents and fellows have just started to get settled in and become very much a part of our work teams. Under our educational program leadership, overseen by Vice Chair for Education Mark Mullins, M.D., the number of applicants to our Diagnostic Radiology Residency has climbed substantially over the past few years to well over

700, of which we interview 100. We are very pleased to welcome our entering, carefully selected group of 14 new future radiologists and to working with them as mentors and colleagues over the next four years. With our nuclear medicine residency, both ACGME and non-ACGME fellowships in numerous subspecialty areas, an allied health program in medical imaging and an abundance of medical students interested in radiology, teaching is so much a part of all that we do. Conversely, learning from each other is the glue that binds us.

Our strong record of accomplishments in the research and innovation aspects of radiology is another component of our

lifeline. The American Recovery and Reinvestment Act (ARRA) has offered new opportunities for funds to support translational research and our faculty have submitted numerous competitive applications. Several proposals, which if awarded, could further contribute needed support to our growing programs at a critical time, have received promising priority scores. Our strong research team, led by Vice Chair for Research, John Votaw, Ph.D., will continue to guide us forward.

Best to all,

Carolyn Cidis Meltzer, MD, FACR  
Chair of Radiology



## AWARDS & RECOGNITION

### Top Atlanta Doctors

The Best Doctors in America database includes the names and professional profiles of approximately 45,000 of the best doctors in the United States. An exhaustive peer-review by thousands of doctors determines the physicians included in the database. Only those who earn the consensus support of their peers, as well as meet additional qualification criteria are included. For this reason, inclusion in the Best Doctors in America database is a remarkable honor!

**Naomi P. Alazraki, MD** Professor of Radiology  
- Nuclear Medicine

**Raghuveer Halkar, MD** Professor of Radiology  
- Nuclear Medicine

**Bruce Barron, MD** Professor of Radiology  
- Nuclear Medicine

**Curtis Lewis, MD** Assistant Professor of Radiology  
- Interventional Radiology and Image-Guided Medicine

**Carl D'Orsi, MD** Professor of Radiology  
- Division Director, Breast Imaging

**David Schuster, MD** Assistant Professor of Radiology  
- Division Director, Nuclear Medicine

**Jacques Dion, MD** Professor of Radiology  
- Division Director, Interventional Neuroradiology

**Andrew Taylor, MD** Professor of Radiology  
- Nuclear Medicine  
- Director, Radioligand and Expert Systems

**William Fajman, MD** Associate Professor of Radiology  
- Nuclear Medicine

### Ioannis Sechopoulos, PhD

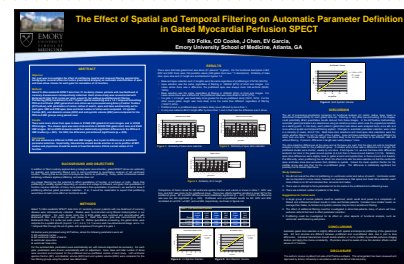
Assistant Professor of Radiology

### Carl D'Orsi, MD, FACR

Professor of Radiology

### Award of Excellence for the Best Medical Imaging Article in the Journal of Applied Clinical Medical Physics in 2008

The American College of Medical Physics awarded authors Drs. Sechopoulos and D'Orsi for their article "Glandular radiation dose in tomography of the breast using tungsten targets", which appeared in Volume 9, Issue 4, Pages 161-171 of the *Journal of Applied Clinical Medical Physics*, 2008.



### First Place Poster

The poster authored by Russell D. Folks, Dr. David Cooke, Dr. Ji Chen and Dr. Ernest V. Garcia received first place at the annual

Meeting of the Society of Nuclear Medicine (SNM) in the category of Technologist Abstract Awards. The content featured detailed information under the title *The effect of spatial and temporal filtering on automatic parameter definition in gated myocardial perfusion SPECT*.

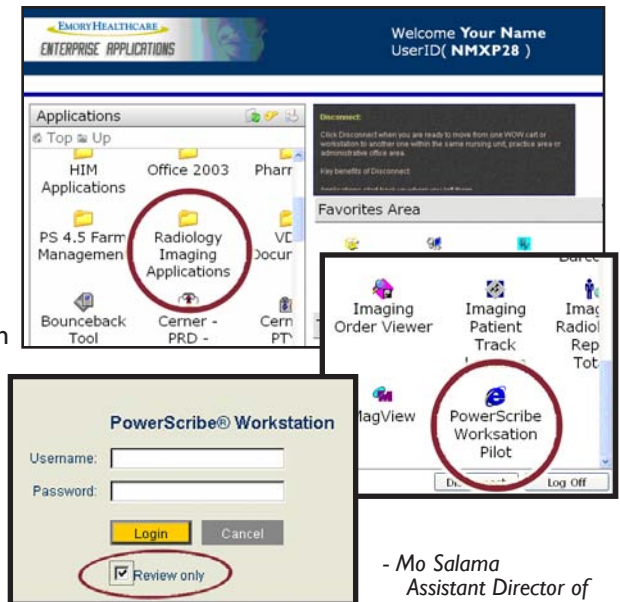
# ADVANCING INNOVATIONS

## Signing from Home

We are pleased to announce that remote access to Powerscribe through the EHC Virtual Desktop (VDT) is now available. This new functionality is the culmination of a collaboration between Emory Radiology, Information Services and the University of Illinois technical teams. This implementation will enable our radiologists to edit and sign reports remotely through the VDT. By affording our faculty, residents and fellows the convenience of editing and signing reports from most computers with Internet access, Powerscribe on VDT should facilitate our goal of reducing report turnaround time.

To access Powerscribe on VDT:

1. Login into EHC Virtual Desktop (VDT)  
(Remote Access:  
<https://support.emory.org>)
2. Click the Radiology Imaging Applications Icon
3. Click the Powerscribe Workstation Icon
4. Check the Review Only checkbox
5. Click Ok on the popup message
6. Type in your Powerscribe Username and Password
7. Click the Login button



- Mo Salama  
Assistant Director of  
Imaging Informatics

## MESSAGE FROM THE VICE CHAIR FOR RESEARCH

### Meet the Team

Welcome to the Research Report in the Rad Report. Each month, this section will feature various research topics to engage the department and encourage involvement. Currently, we are still in the moving-in phase as the team under the Vice Chair for Research comes together.

Our team includes:

**Mariana Teodorescu, Grants and Contracts Administrator:** Mariana's role is the financial end of our operation including keeping the research budget for the department. She also is responsible for helping investigators prepare budgets for grant applications and spending tracking after an award is made.

**Linda Burr, Project Coordinator Supervisor:** Linda is my right hand and oversees all of the project coordinators in the department. It is our goal to have a streamlined operation so that a scientist can concentrate on the science when preparing a grant application. All other aspects, such as collecting and filling out the necessary forms, obtaining signatures, filling in resources, etc. will be handled by Linda and her team with minimal input from the scientist. (See page 8 for more detail.)

**Angie Williams, Research Nurse Coordinator:** Whereas Linda's role is to make applying for funding easier, Angie's role

will make performing the studies easier. Again, our goal is that the primary concern of the scientist is the science and data. Angie's team helps with all of the necessary approvals prior to studying a human, such as the IRB, radiation safety, GRC, and OGC. If nursing services are needed to perform the study, Angie is your contact.

**Mary David, Administrative Assistant:** Mary is my other right hand. She schedules all of our tasks and makes sure our office runs smoothly. She helps all of us to function more efficiently.

In introducing my team, as I have above, I have put an emphasis on applying for funding and carrying out funded studies. This is a very important part of my mission, but it is not the entirety of my mission. I want to include research and researchers in all aspects of our department. In future articles, I will describe our efforts to improve: mentoring, medical student research, resident and fellow education, encouraging more faculty involvement in research, and improving our quality and service. In all of these endeavors, I will be working closely with my fellow Vice-Chairs.



The Vice Chair for Research and his team will work to streamline the processes: (left to right) Angie Williams, Mariana Teodorescu, Dr. John Votaw, Mary David and Linda Burr.

Please feel free to contact me or my office either in person or by phone:

John Votaw, 712-7954  
-Vice Chair for Research  
Linda Burr, 712-5809  
- general inquiries  
Mariana Teodorescu, 778-4244  
- budget matters  
Angie Williams, 778-5624  
- nursing

My office is part of a new office suite at EG-60 on the ground floor of EUH in the area formally occupied by the cyclotron. There are a couple of ways to get there:

- 1) go down the stairwell off of the back hallway of Nuclear Medicine. After emerging on the ground floor, the door at the end of the long hall is the entrance to the research and administrative offices of the department.
- 2) take the E, F, or G elevators to the ground floor and follow signs to "facilities management". We are right next to them.
- 3) get anywhere close then pull out your cell phone and call us at 404 712-5809. This is likely your best option until we have more signs installed.

Please stop by to visit. I am in and out much of the day so a call first might save a trip.

John Votaw, PhD  
Vice Chair for Research

## NEW GRANTS

### Motion Correction and Quantitative Image Analysis for Kidney MR Imaging

*Principal Investigator:*

Baowei Fei, PhD  
Diego Martin, MD, PhD

*Co-Investigators:*

John Votaw, PhD  
Xiaofeng Yang, MS

*Funding Organization:* Atlanta Clinical & Translational Science Institute/ URC Emory University

**Significance:** Progressive diseases of the kidney and development of renal failure requiring dialysis or renal transplantation is becoming an alarming healthcare issue in the United States. The prevalence of obesity is the largest of any nation with estimates of 23% of the population meeting clinical definition for obesity. Diabetes and hypertension related to obesity have also been increasing. The current incidence of chronic kidney disease (CKD) and dialysis is 45,000 and 23,000 new cases per year, respectively. Treatment of endstage renal disease is transplantation, but transplants may fail acutely and subacutely due to surgical and immunological complications, or chronically due to immunological rejection or anti-rejection medication toxicity. Therapies are being formulated for the major causes of progressive renal disease and for improving kidney

transplant survival, however, there is a lack of non-invasive comprehensive reproducible clinical tests that are readily available. Safe, noninvasive, fast and reproducible imaging technique of renal structure and function may provide a better alternative to fulfill the important unmet clinical need.

The overarching aim is to improve outcomes of therapy and kidney transplant survival by improving monitoring of disease and measurement of treatment effects. We will develop an MRI technology comprised of comprehensive modules including rapid image acquisition technique, automatic image processing and motion correction algorithms, and statistical and quantitative analysis components that may be packaged and made immediately available to the clinical centers caring for renal disease patients.

### Multiparametric Non-Invasive Evaluation of Liver Disease: Hepatic Lipid Quantification Using Combined Magnetic Resonance Spectroscopy and Imaging

*Principal Investigators:* Xiaoping Hu, PhD; Diego Martin, MD, PhD

*Funding Organization:* Wallace H. Coulter Translational Clinical Research Grant

**Significance:** The overarching aim for this study is to develop non-invasive MR imaging methodology to significantly improve diagnostics and treatment of fatty liver disease and hepatitis. Liver disease is amongst the most common source of morbidity and mortality worldwide. A major limitation is that we depend on liver biopsies for measuring HL. Biopsies are time-consuming, may be painful and can cause serious complications from bleeding. Magnetic Resonance Spectroscopy (MRS) and Magnetic Resonance Imaging (MRI) have the potential to measure HL with more accuracy, non-invasively, safer, and faster. We intend to develop an innovative MR method for whole liver lipid measurement that will be highly validated, rapid, and easily implemented.

Our overarching objective is to improve diagnosis and monitoring of fatty liver disease and hepatitis to improve long-term outcomes and reduce the incidence of advanced chronic liver disease. We propose a streamlined combination of MR methods, combining spectroscopy with imaging, that together will provide a liver lipid measurement method that will surpass any currently available. Our spectroscopy method is undergoing patent approval. This study objective is to fully develop a fast scan with all data analyzed using post-processing tools that will be user friendly, automated and with commonly available level of expertise at clinical MRI centers. Once completed, we expect high demand for our system at clinical centers, including community practices.

## CHECK IT OUT

**Fornwalt BK, Delfino JG, Sprague WW, Oshinski JN.** It's time for a paradigm shift in the quantitative evaluation of left ventricular dyssynchrony. *J Am Soc Echocardiogr.* 2009 Jun;22(6):672-6.

**Fornwalt BK, Sprague WW, Carew JD, Merlino JD, Fyfe DA, León AR, Oshinski JN.** Variability in tissue Doppler echocardiographic measures of dyssynchrony is reduced with use of a larger region of interest. *J Am Soc Echocardiogr.* 2009 May;22(5):478-85.

**Karathanasis E, Chan L, Karumbaiah L, McNeeley K, D'Orsi CJ, Ananth, Annapragada V, Sechopoulos I, et al.** 2009 **Tumor Vascular Permeability to a Nanoprobe Correlates to Tumor-Specific Expression Levels of Angiogenic Markers.** *PLoS ONE* 4(6): e5843. doi:10.1371/journal.pone.0005843.

# Radiology Resident Introductions

This is an exciting time of the year when the Radiology Department has a chance to welcome the new residents. This group offers new energy and talent as they begin the process of becoming radiologists.



**Nnenna Aguocha, MD, MPH**

*Medical School:* Emory University SOM

*Interesting fact:* Nnenna is fluent in Igbo (a Nigerian language) and sings opera. She also enjoys dancing, in such styles as dombolo, zouk, zoukous, couper decaler and kwaito.



**Daniel Russell, MD**

*Medical School:* Medical College of Georgia

*Interesting fact:* Daniel performed on drum lines in high school and college.



**Todd Cramer, MD, MPH**

*Medical School:* Emory University SOM

*Interesting fact:* Todd is following in the footsteps of his father and grandfather to become a radiologist. He worked for Greenpeace before becoming a doctor and has always treasured the natural environment.



**Ayesha Sarpong, MD**

*Medical School:* Duke University SOM

*Interesting fact:* Ayesha is fluent in Akan and was born in Kumasi, Ghana.



**Ankur Doshi, MD**

*Medical School:* Mount Sinai School of Medicine of New York University

*Interesting fact:* Ankur is fluent in Spanish and Gujarati, and enjoys snorkeling and playing paddleball. He has also bungee jumped off of the world's tallest bridge, located in South Africa.



**Riley Smyth, MD**

*Medical School:* Emory University SOM

*Interesting fact:* Riley is an award-winning photographer who enjoys skiing, snowboarding and wake boarding.



**Meryle Eklund, MD**

*Medical School:* Tulane University SOM

*Interesting fact:* Meryle partakes in weekly basketball games, sketches and paints for pleasure. She donated a painting to the Nicaragua Medical Outreach Program raffle and to Baylor College of Medicine.



**Santhi Kollengode, MBBS**

*Medical School:* Medical College, Calicut

*Interesting fact:* Santhi is fluent in Hindi, Tamil, and Malayalam. Her hobbies include cross-stitching and cricket.



**Nicholas Henson, MD**

*Medical School:* Mercer University SOM

*Interesting fact:* Nick's hobbies include hunting, fishing, metal fabrication, and fixing electronics. He was named the Regional Residential Plumbing Champion in 1998.



**Grant Webber, MD**

*Medical School:* University of South Florida College of Medicine

*Interesting fact:* Grant is an outdoor enthusiast and loves softball, flag football, basketball, volleyball, golf, and baseball.



**Lillian Ivansco, MD, MPH**

*Medical School:* Emory University SOM

*Interesting fact:* Lillian was a writer for the Atlanta Journal-Constitution for six years, and formerly played the violin with a local rockabilly band called the Vidalias.



**Bryan Yi, MD, MPH**

*Medical School:* New York Medical College

*Interesting fact:* After being an All-State lacrosse player, Bryan began his Hopkins education with the goal of playing professionally. He has also traveled extensively in Asia.



**Andrew Lemmon, MD**

*Medical School:* University of South Florida College of Medicine

*Interesting fact:* Andrew grew up on a farm, had a feisty pet llama and used to milk goats.



**Contessa Metcalfe, MD**

*Medical School:* Saint Louis University SOM

*Subspecialty:* Nuclear Medicine

*Internship:* National Naval Medical Center

*Interesting fact:* Contessa just finished a 5-year tour in the U.S. Navy as a Flight Surgeon.



**Erica Piduru, MD**

*Medical School:* University of South Florida College of Medicine

*Interesting fact:* Erica worked as the manager of Williams-Sonoma and is now an excellent cook. She and her husband are expecting their first child in December.



**Ricardo Sein, MD**

*Medical School:* Universidad Católica Madre y Maestra

*Subspecialty:* Nuclear Medicine

*Residency:* Ramon Ruiz Arnau University Hospital of Universidad Central del Caribe – Bayamon, Puerto Rico

*Interesting fact:* Ricardo worked in the skydiving industry while studying for the USMLE's and has over 12 hours and 2,200 miles of freefall which numbers continues to grow.

# Introducing the Radiology Fellows

Welcome Fellows! We are happy to recognize those who have continued to grow here at Emory following their residency program and welcome those who are bringing fresh initiative as they join the Radiology Department.

## Abdominal Imaging



### Craig Dick, MD

*Medical School:* George Washington University  
*Residency:* Emory University SOM  
*Interesting fact:* Craig was on a safari in Botswana and Zimbabwe central Africa and was asked to immunize people in the villages in the outback.



### Sarah Erickson, MD

*Medical School:* Eastern Virginia Medical School  
*Residency:* Emory University SOM  
*Interesting fact:* Sarah has completed 2 half marathons and participated in this year's Peachtree Road Race for the 4th consecutive year.



### Daniel Gober, MD

*Medical School:* Mercer University  
*Residency:* Emory University SOM  
*Interesting fact:* Daniel was once cast as an extra in the movie "Tank Girl".



### Aruna Polsani, MD

*Medical School:* Kasturba Medical College in Karnataka, India  
*Residency:* Mahadevappa Rampure Medical College  
*Interesting fact:* Aruna enjoys cooking Indian food and has traveled to 10 states visiting various locations along the way.



### Bhumi Rawal, MD

*Medical School:* University of Alabama SOM  
*Residency:* University of Texas Health Science Center  
*Interesting fact:* Bhumi loves Bollywood movies and music and trying new restaurants.

## Breast Imaging



### Rebecca Seidel, MD

*Medical School:* Jefferson Medical College  
*Residency:* Emory University SOM  
*Interesting fact:* Rebecca enjoys listening to live music and traveling, in addition to spending time with her husband and 2 year old son.



### Janet Wall, MD

*Medical School:* Emory University SOM  
*Residency:* Emory University SOM  
*Interesting fact:* Janet enjoys running, traveling, and spending time with her husband and son.

## Interventional Radiology & Imaging Guided Medicine



### S. Dustin Bright, MD

*Medical School:* University of Alabama SOM  
*Residency:* Baptist Health Systems  
*Interesting fact:* Dustin likes to travel on medical missions, play golf and play basketball.



### Fernando Mateo, MD

*Medical School:* University of Puerto Rico  
*Residency:* University of Puerto Rico Medical Sciences Campus  
*Interesting fact:* Fernando has a degree in Mechanical Engineering from Purdue Univ., speaks three languages, likes to play basketball, baseball and jog.



### Hasmukh Prajapati, MD

*Medical School:* B.J. Medical College, Gujarat Univ.  
*Residency:* Department of Radiodiagnosis NHL Medical College  
*Interesting fact:* Hasmukh has trained in classical Indian vocal music and can speak four variations of the Indian language. He enjoys playing cricket and table tennis, in addition to traveling.



### Roger Williams, DO

*Medical School:* University of Ohio  
*Residency:* Christian Care Hospital  
*Interesting fact:* Roger trains in the martial arts, he loves history and likes to travel.

## Neuro Interventional



### Jesse Schuette Jr., MD

*Medical School:* Emory University SOM  
*Residency:* Emory University SOM - Neurosurgery  
*Interesting fact:* Jesse got his 15 minutes of fame after being elbowed in the face by a UNC basketball player when he rushed the court at a Duke basketball game.



### Mark Dannenbaum, MD

*Medical School:* University of Texas Houston Health Science Center  
*Residency:* Baylor College of Medicine Neurosurgery  
*Interesting fact:* Mark enjoys playing and trying to teach his kids golf and tennis. He likes to attend concerts and live music as much as possible.

# Introducing the Radiology Fellows

## MR Body Imaging



### Daniel Karolyi, MD, PhD

*Medical School:* Medical College of Georgia  
*Residency:* Emory University SOM  
*Interesting fact:* Dan played saxophone in several bands in Atlanta to help pay his way through college and once played on stage with Jimmy Buffett.

## Musculoskeletal



### D. Nelson Anderson, MD

*Medical School:* University of New Mexico SOM  
*Residency:* Emory University SOM  
*Interesting fact:* Nelson finished 2<sup>nd</sup> in a national ballroom dancing competition while in Med school.



### Jason Hoover, MD

*Medical School:* University of Alabama at Birmingham SOM  
*Residency:* Emory University SOM  
*Interesting fact:* Jason coaches football, soccer, wrestling and baseball for Mountain Park Little League Teams and Parkview High School.



### W. Wyndham Owens, MD

*Medical School:* Medical University of South Carolina  
*Residency:* Emory University SOM  
*Interesting fact:* Wyndham uses malted barley to brew his own beer which takes a few weeks before he can bottle and enjoy his amber ales.



### Stephen Sabourin, MD

*Medical School:* Wake Forest University SOM  
*Residency:* Emory University SOM  
*Interesting fact:* Stephen plays in an ALTA tennis league and used to be a competitive racquetball player.

## Pediatric Radiology



### Kristopher Lewis, MD

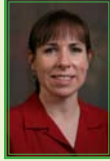
*Medical School:* Emory University SOM  
*Residency:* Medical College of Georgia  
*Interesting fact:* Kristopher enjoys spending time with his two-year-old son who often eats more than his dad to sustain his seemingly endless energy.



### Unni Udayasankar, MD

*Medical School:* T D Medical College, India  
*Residency:* V.S.S. Medical College & Hospital-India  
*Interesting fact:* Unni is actively involved in the Atlanta Cricket League, which has more than 50 teams competing.

## Neuroradiology



### Macey Bray, DO

*Medical School:* Kirksville College of Osteopathic Medicine  
*Residency:* OSF St. Francis Medical Center  
*Interesting fact:* Macey took an extra year in Medical School to complete an Anatomy Fellowship and assist in running a free clinic.



### Manish Jani, MD

*Medical School:* Meharry Medical College  
*Residency:* Indiana University SOM  
*Interesting fact:* Manish cycled 400 km along the EuroVelo6 route from Donaueschingen, Germany to Vienna, Austria



### Todd Nichols, MD

*Medical School:* University of Mississippi SOM  
*Residency:* University of Mississippi Medical Center  
*Interesting fact:* Todd has never made a car payment in his life.



### Appleton Scutchfield, MD

*Medical School:* University of Kentucky  
*Residency:* University of Florida  
*Interesting fact:* Appleton has hiked the Inca Trail to Machu Picchu in Peru and has also trailed 60 miles in Glacier National Park.



### Jeffrey Steinig, MD

*Medical School:* Drexel University SOM  
*Residency:* University of Florida  
*Interesting fact:* Jeffrey enjoys baseball, movies, comedy, USA, enjoy reciting dialogue from 1980s action movies specifically Die Hard.



### Eric Wandler, MD

*Medical School:* New York University SOM  
*Residency:* Beth Israel Medical Center  
*Interesting fact:* Eric has his hands full at home with a 17-week old yellow lab puppy named Bronwyn.



### Matt Zygmunt, MD

*Medical School:* Baylor College of Medicine  
*Residency:* Emory University SOM  
*Interesting fact:* Matt is a certified scuba diver. He enjoys diving at ship wreck locations in the Caribbean and has been up to 80 feet underwater.

## Nuclear Medicine



### Gopi Sirineni, MD

*Medical School:* Osmania Medical College – India  
*Residency:* Gandhi Medical College, Gandhi General Hospital-India  
*Interesting fact:* Gopi has a passion for digitally editing photos by morphing, changing or adding special effects.

# GETTING TO KNOW YOU

## Research Project Supervisor

Staying connected with the Research Office of the department becomes crucial as Radiology Research programs at Emory continue to contribute to our significant ascent in NIH rankings. According to the Vice Chair for Research, Dr. John Votaw, "Research has something to offer to all missions, with mutual benefits to all members of the department." (Rad Report, July 2009). The Research Project Supervisor plays an important role for the Department of Radiology, supporting research faculty and their numerous projects, mentoring the research administrative support staff and assisting the Vice Chair for Research. Linda Burr takes on this role; nimbly adjusting to changes associated with the grant submission process and helps to alleviate some of the endeavors linked to research, increasing the efficiency of these numerous procedures.

### Research Coordinator Supervisor

The Research Project Supervisor is responsible for overseeing all the Radiology Research Coordinators, in addition to mentoring, collaborating and supporting them as they assist the Research Faculty. In this role, Linda Burr is a direct contributor to the

Research Coordinators annual evaluation, processing the faculty feedback and providing her own input. Additionally, Linda makes herself available to aide these coordinators during periods of overwhelming grant submissions and deadlines.

### Research Grant Support

Strong communication skills are vital for the Research Project Supervisor in order to provide endless updates in grant application procedures, regulations and deadlines. Linda Burr works closely with Mariana Teodorescu, Grants and Contracts Administrator; and Angie Williams, Research Nurse Coordinator; to ensure all deadlines are met and requirements are fulfilled. The Research Project Supervisor is also responsible for serving as a project liaison to other departments, outside organizations and industries, and government agencies. As grant cycles can prove to show inconsistencies in workload throughout the year, Linda takes it upon herself to be available at any hour to assist the investigator to ensure a grant is completed and deadline met. Linda works closely with the Vice Chair for Research to optimize the goal of implementing a streamlined

operation, so the researchers can focus on the science aspect of a grant while the coordinators and Linda guide the grant application documents.

### Assistant to the Vice Chair for Research

The vision of the newly appointed Chair for Research, Dr. Votaw has spurred several projects currently being taken on by the Research Project Coordinator to ultimately help promote internal and external collaboration and research growth. Linda is developing a comprehensive database that will track all research activity in our department. Additionally, she is collecting material from various internal sources to compose a research manual for investigators to use as a valuable resource to answer grant processing questions. Lastly, Linda has taken on the work of creating a comprehensive slide presentation that will be later posted on the web for researchers world-wide to learn more about the exciting research projects and new technologies within the Emory Department of Radiology. Changes will be evident



Linda Burr began her Emory Career at Grady almost 19 years ago.

as Dr. Votaw and Linda work together to develop tools for internal and external research collaborations and to streamline the process of grant submissions. Ultimately, the combination of efforts will position Emory Radiology for international recognition.

### Previous Experience

For almost 19 years, Linda has been a dedicated employee of Emory, starting at Grady in the Department of Obstetrics and Gynecology (OB/GYN) as an Administrative Assistant. Over the years, she has worked in various locations and departments, eventually landing in Radiology as a Research Coordinator at Emory University. During her 8 years in Radiology, she was promoted to Research Supervisor and now holds her current position with additional responsibilities. Prior to gaining valuable career experience, Linda received her diploma in nursing at King's Daughters School of Nursing, Ashland, KY.

For more information on Research process or questions, contact Linda Burr at 404-712-5809 or lburr@emory.edu. You can also feel free to stop by her new office location in the Emory Hospital, EG60.

-Alaina Shapiro, Communications Coordinator

## STRIVING FOR EXCELLENCE

### Collaborate for Success

"We must collaborate or perish—across borders, cultures, disciplines and firms, and increasingly with masses of people at one time." Wikinomics, Chapter 1, Tapscott and Williams.

Successful collaboration is a critical component of a healthcare organization's success. Collaboration spans and surpasses organizational hierarchies, reaching for complementing skill sets at all levels. Effective collaboration is multi-layered. It begins with a foundation of collaborative effort within a given work unit or team and scales up to intra departmental, interdepartmental, as well as inter institutional collaboration. In

order to achieve effective collaboration within a health care setting, the entire patient care process requires a joint effort to take place between all teams and departments that have a direct or indirect role in meeting the patient and family needs.

With the ever growing ubiquity of technology, the need to effectively leverage new technologies to enhance collaboration and communication is essential. The responsibility is incumbent upon us to be diligent in choosing the appropriate tool for a given function.

The interwoven nature of radiology throughout the healthcare system presents us with an opportunity to be the catalyst for effective communication and collaboration. Challenge yourself to identify the technology that can most effectively communicate within your area

and then with other departments. As a member of radiology we can not ignore the opportunities to infuse the system with strengthened relationships and streamlined processes.

- Mo Salama  
Assistant Director of Imaging Informatics





# IN THE KNOW

## Quality Corner

### \*\* Defining Safety \*\*

Safety is (the set of processes and strategies for) the avoidance of unnecessary risk and the minimization of necessary risk. Safety is also necessary but not sufficient to ensure quality.

What is your definition of safety? I would like to hear from each member of the department expressing your thoughts on defining safety, as well as how to best improve it in your immediate work area. I look forward to your suggestions at [keapple@emory.edu](mailto:keapple@emory.edu).

*Look for these posters in your area to spark safety inspiration.*

## Emory Radiology ICARE for SAFETY

### Support team members

- Help your colleagues stay safe
- Thank others for keeping you safe
- Promote teamwork and group understanding

### Act courageously

- Use STARS to report errors or concerns
- Speak up about possible safety risks

### Focus on the moment

- Concentrate on the task or person at hand and avoid distractions
- Be alert during high risk moments ( obtaining and administering medication, performing a procedure on a patient, entering information into a computer database, working around sensitive equipment, etc.)

### Eyes wide open

- Constantly observe the environment for safe practices
- Pay attention to detail
- Include all multidisciplinary team members and patients
- Anticipate potential risks

### Talk to one another

- Communicate both vertically and horizontally (Supervisor, peer, physician, patient, customer) about vital information
- Ask clarifying questions
- Be specific to area and activity
- Focus on priority □need to know□information
- Use a standard approach every time

### You are not alone

- Together, we keep our patients and visitors safe
- We keep each other safe

## Did you know

that Emory is playing a significant role in educating the Tibetan Monks on Western Science?

Read the article in Science section of the June 29, 2009 issue of The New York Times: <http://www.nytimes.com/2009/06/30/science/30monks.html>

## HR Tip

### An Effective Work-Life

Utilize the resources provided by the Emory WorkLife Resource Center to maximize the time you work.

The Center's goals are to provide university employees with a virtual location for work-life programs and services, strengthen work-life at Emory, understand the needs of the campus and build new programs as they relate to work-life.

- Available anytime online:  
[worklife.emory.edu](http://worklife.emory.edu)

- Website provides information about:

- o Childcare and Eldercare
- o Workplace Flexibility
- o Financial Savings
- o Time Off

The Worklife Resource Center can be contact at [worklife@emory.edu](mailto:worklife@emory.edu) or by calling 404-727-8000

# GET INVOLVED

## Peachtree Road Race

While many slumbered without remorse this Fourth of July morning, tens of thousands amassed onto the cool awakening pavement of Peachtree Road in Buckhead. Alongside this annual congregation, hundreds more began stockpiling water, pamphlets, barricades, signs, tents, and observation platforms. This year marked the 40th annual running of the Peachtree Road Race,

both in the race and at the sponsorship tent." The mentioned "tent" was organized to greet Emory runners, provide food and drinks, and promote camaraderie amongst employees. To help celebrate the accomplishments of the runners, Dr. Michael Johns, Chancellor, Emory University, and Executive Vice President for Health Affairs, Emeritus, was present to congratulate

G. Komen Race for the Cure and even the Radiology Rebels summer softball team, to name a few. These activities promote both a healthy lifestyle and unity within the Department of Radiology.

Not many can run like Sammy Kitwara from Kenya who placed 1<sup>st</sup> with a time of 27:22. Even so,



Each year, on the 4th of July weekend, the city of Atlanta hosts the world's largest 10k marathon.

was the first time The Atlanta Track Club published suggested arrival times were published for the participants to avoid mass crowds waiting at the start line. "The staggered start times that were announced in advance this year made it much easier to navigate the staging area and alleviate some of the crowding concerns from previous years."

Abdominal Imaging Fellow, Dr. Sarah Erickson, completed the race alongside of her husband for the 4th consecutive year. "The Peachtree Road Race is a classic Atlanta event and many enjoy participating in this fun race." This year was especially enjoyable for Dr. Erickson as she details "the perfect weather" that runners experienced.

It was a race for pride and enjoyment, as much as it was day for friends and family. After all, it's not really about one's finishing time. When asked about his performance, Puneet replied, "Not bad. I only lost by 25 minutes!" Congratulations to those Radiology participants who completed the race, regardless of their time.

If you would like to be acknowledged for running in next year's Peachtree Road Race, please send your name to [radiologycomm@emoryhealthcare.org](mailto:radiologycomm@emoryhealthcare.org) after you have received your registration confirmation for the July 4, 2010 race.

-Alaina Shapiro,  
Communications Coordinator



Approximately 1500 Emory Healthcare and University employees, along with their families, registered to participate in the 2009 Peachtree Road Race.

the world's largest 10K, with participants in excess of 50,000.

Emory's representation at the Peachtree Road Race was impressive: approximately 1500 Emory Healthcare and University employees, along with their families, registered to participate in this community-based event. Among some of the participants from Radiology were Dr. Deborah Baumgarten, Dr. Sean Dariushnia, Dr. Sarah Erickson, Edwin Herrod, Dr. Daniel Karolyi, Dr. Paolo Lim, Dr. Hamilton Reavey, Dr. David Schuster, Dr. Puneet Sharma, Dr. Kay Vydareny and Trecia Wertz.

Clinical MR Physicist, Dr. Puneet Sharma, who was running for the 7th time, remarked, "It was great to see such a large Emory presence,

the Emory Healthcare and University participants.

Since 1993, "Emory Healthcare has been a proud sponsor of the Peachtree Road Race," according to Marisol Cintron, Senior Marketing Manager for Emory Healthcare. "The large number of Emory University and Emory Healthcare employees demonstrates the commitment of our staff who recognize the value of staying fit as an integral part of the total health equation."

The Department of Radiology has been getting involved this year with numerous health-conscious events such as the Radiology's "Biggest Loser" contest, the Susan

our own Abdominal Faculty member, Dr. Deborah Baumgarten, finished the race in an impressive 49 minutes. This race marked Dr. Baumgarten's 12th consecutive year to complete the race. For her, it is now a July 4th tradition of completing the race and then spending the rest of the



Radiology participants (left to right) Drs. Dan Karolyi, Kay Vydareny and Puneet Sharma celebrate their completion of the Peachtree Road Race.

day with friends to celebrate the holiday. Dr. Baumgarten also mentioned that this year

# GET INVOLVED

## Spontaneous Events

In the Radiology Department, we have taken deliberate steps to strengthen relationships throughout the department through social events. While acknowledging the strain of balancing the budget at work and at home, we do not want to forgo the progress that has been made over the past couple of years.

In efforts to encourage ongoing social events through these tough times, we are initiating a series of Spontaneous Events. These events will include Atlanta Symphony Orchestra (ASO) performances and events at Chastain Park Amphitheatre. Laura Padgett, Recruitment and Events Coordinator, will be sending reduced price ticket offers to all radiology faculty and staff. The special offer prices have been arranged with a short lead time for quick turn around on impromptu gatherings. Take advantage of the great prices and remember to ask a work friend if you will see them there.

## Quality Scoreboard

- The Customer Service Excellence Committee has implemented a program to acknowledge the modalities that have the best customer service scores.
- The efforts made by the staff are consistent with hospital goals of keeping the patients updated about waits and delays, explaining the procedures and overall kindness and courtesy to the patients. Following the monthly tally of customer service scores, the top modalities at each location are recognized for their customer service efforts.
- When determining the winner, the scores used are from the Press Ganey reports published on the EUSHC.org website, and focus on one question: Overall rating of care. The scoring is first broken out by modality and then by location. All staff were asked to encourage the patients to return their surveys, if they receive one.

### July Winners:

Ultrasound - Emory University Hospital Midtown  
 Ultrasound - Emory University Hospital  
 CT - Emory University Hospital  
 PET - The Emory Clinic

If you would like to review the scores for your area, all scores are posted in their appropriate sections. Use your huddle time to develop strategies to streamline processes for patients and remember to recognize each other for a job well done.



**EMORY HEALTHCARE**

# Department-wide Assembly

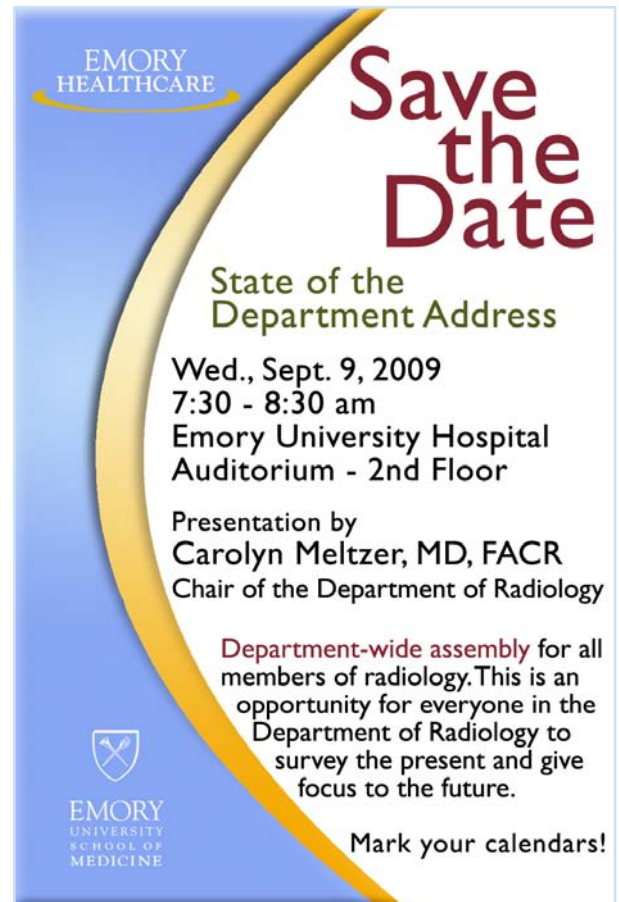
**Wednesday, August 12, 2009**  
 7:30 - 9:00 a.m.  
 Emory University Hospital Auditorium - 2nd Floor

Presented by  
**Carolyn C. Meltzer, MD, FACR**  
 Chair of the Department of Radiology

Topic  
**Standing Strong in a Weak Economy**  
**- UPDATE -**

Please make time in your schedule to attend this department-wide assembly for all members of radiology. This is an opportunity for everyone to understand the direction of the Radiology Department in the current economic climate.

**EMORY UNIVERSITY SCHOOL OF MEDICINE**



**EMORY HEALTHCARE**

# Save the Date

## State of the Department Address

**Wed., Sept. 9, 2009**  
 7:30 - 8:30 am  
 Emory University Hospital Auditorium - 2nd Floor

Presentation by  
**Carolyn Meltzer, MD, FACR**  
 Chair of the Department of Radiology

Department-wide assembly for all members of radiology. This is an opportunity for everyone in the Department of Radiology to survey the present and give focus to the future.

**Mark your calendars!**

**EMORY UNIVERSITY SCHOOL OF MEDICINE**

Grand Rounds & Research Conferences will resume the first week of September. Check the Current Events page at [www.radiology.emory.edu](http://www.radiology.emory.edu) for up-to-date schedules.

## NEW FACULTY



### Ashley Aiken, MD

Assistant Professor, Neuroradiology

Dr. Aiken completed her Neuroradiology Fellowship and continued as a member of the faculty at the University of California, San Francisco before joining Emory. In 2006, Dr. Aiken was honored with the American Society of Head and Neck Radiology (ASHNR) 2<sup>nd</sup> place award, Educational Exhibit for "Lymphoma

Mimics in the Head and Neck". She continues to publish her research and present at various conferences across the country. In addition to her research presentations, Dr. Aiken has teaching experience as she presented several cases to faculty and staff at Grand Rounds, Neuroradiology Rounds and Resident Case Conferences at the University of California, San Francisco. She is active in several professional organizations, such as the American Society of Neuroradiology, Radiologic Society of North America, American Roentgen Ray Society and American society of Head and Neck Radiology.



### Matthew Krasner, MD

Assistant Professor of Radiology –VA

Dr. Krasner's most recent research details "The Utility of Portable Chest Radiograph Measurements in Differentiating Congestive Heart Failure from Other Causes of Dyspnea in Patients Presenting to Emergency Room". Dr. Krasner is an active member of several professional organizations such as the American College of Radiology, Pennsylvania Radiological Society, American Roentgen Ray Society and Radiological Society of North America. He was also awarded the Excellence in Teaching by the Radiology Fellows at the Hospital of the University of Pennsylvania for 2007-2008.

Dr. Krasner received his MD from The University of Texas Health Science Center Medical School. He continued his education with an Internship and Radiology Residency from the Albert Einstein Medical Center in Philadelphia, Pennsylvania. After completing his residency, he was a Fellow in Abdominal Imaging at the Hospital of the University of Pennsylvania.

## NEW FACES & APPOINTMENTS



### David Brandon, MD

Assistant Professor, Nuclear Medicine

Dr. David Brandon has commenced duties as Associate Program Director, Nuclear Medicine Residency. He has assumed primary responsibility for scheduling resident learning activities, scheduling faculty for the MEDI 725 course and other lectures to radiology. He and Dr. Lee, Program Director,

will work together on matters of resident/faculty/program evaluations, NRC compliance, resident training verification/certification, and all other matters.

Dr. Brandon also has several years of research experience that includes studies of lymphomatoid granulomatosis by PET/CT. Dr. Brandon earned his medical degree from Baylor College of Medicine, and completed his Nuclear Medicine residency at the University of Texas Southwestern.



### Stacey Gordon, RT (R)

Radiology Applications Trainer - EUH

Stacey has seven years of lithotripsy and mammography experience, in addition to five years with Emageon as a Clinical Analyst and Implementation Specialist. She received her BA in Psychology from SUNY Binghamton and RT in Radiography certification from Jefferson State Community College. Stacey is athletic as she has climbed Mt. Kilimanjaro.



### Kurt Houser

Imaging Support Team Member - EUH

Kurt began his health care IT career in January 2003, with Cerner Corporation as an interface engineer. He later became a solution architect for their ProVision PACS offering and most recently, was responsible for ED IS initiatives with Carolinas HealthCare System in Charlotte. Kurt received his BBA in Management Information Systems from The University of Georgia.

## Free Breast Health Screening at Emory Winship Cancer Institute

Tuesday, October 6, 2009 ~ 4:30 to 6:30 p.m.

Receive a free manual breast exam and meet our multidisciplinary team of physicians, advanced practice nurses, oncology nurses, researchers, social workers, geneticists, physical therapists, nutritionists and counselors specializing in breast health and breast cancer treatment. This event is free and insurance is not required to participate. Refreshments will be provided.

To register, please call Emory HealthConnection at 404-778-7777.

**Look** for a new issue of the Rad Report the first full week of September.