

Predictive Medicine

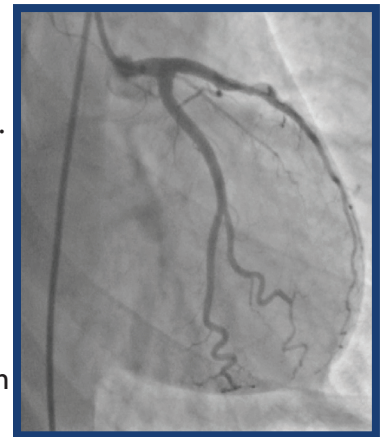
Emory Healthcare is now offering a comprehensive screening of cardiovascular risk factors at the Cardiac Imaging Center. This package accentuates Emory's effort to strive toward predictive medicine and reduce the practice of reactive medicine.

The idea of predictive medicine is quickly gaining awareness and has been demonstrated through the success of the Heart Fair in February. Over the course of Heart Month, the Cardiac Imaging Center performed nearly 200 comprehensive screenings, with 72% of the patients new to the Emory System. The success continued with the ING Marathon in March when Emory participated as a sponsor and featured this service to the marathon runners. Emory volunteers assisting with the marathon received unsolicited positive feedback regarding the efficiency and piece of mind the comprehensive screening provided to the runners. As a sponsor of the up-coming Peachtree Road Race, Emory will be encouraging runners to add this screening to their to-do-list when preparing for the challenges of the race.

This service is an opportunity for patients to become educated on the specific needs of their body. Being aware of these needs allows the patient to make any necessary adjustments to live a healthy life. The comprehensive screening is packaged at the low cost of \$125 and includes an evaluation of blood pressure, fasting lipid profile, Framingham Risk Score, coronary artery calcium scoring and glucose levels. Though others may offer similar services, Emory utilizes the technology of the only dual source CT in

the state of Georgia. This technology is utilized during the CT scoring portion of the comprehensive screening.

The patient leaves their screening aware of their blood pressure and preliminary CT Score. In the event that a CT score is above 300, the patient is given the option to meet with a nurse practitioner that day.



The comprehensive cardiovascular screening is suggested for ages 40 years and above, unless there is a family history of heart disease, diabetes or renal disease. Restrictions for this procedure include: cardiac stents in place, history of cardiac bypass surgery and pregnancy.

For more information or to schedule an appointment please call 404.778.7226.

- Monica Johnson

In this Issue:

Letter from the Chair	2
Awards & Recognition	2
In Memory	3
New Procedures	3
Grant Opportunities	4
Current Research	5
Check it Out	5
Striving for Excellence	6
Service Awards	6
Get Involved	7
New Faces & Appointments	8

EMORY HEALTHCARE is a sponsor of the 2007 Peachtree Road Race. More than 1,450 employees and family members are participating in the annual race, which takes place on Wednesday, July 4, 2007. All employees are invited to the hospitality tent after the race in Piedmont Park to meet with Michael Johns, MD, Executive Vice President for Health Affairs and CEO of the Woodruff Health Sciences Center (WHSC). Registration is now closed. - Marilyn Baron

For information on volunteering visit www.atlantatrackclub.org, e-mail vol@atlantatrackclub.org or call (404) 231-9064 ext. 12.

Letter from the Chair

Dear Colleagues,

Our Department continues to grow and flourish thanks to the hard work and talent of our faculty, staff, and trainees. In this issue of Rad Report, we celebrate their accomplishments.

Congratulations to Dr. Ernie Garcia for leading the way as an innovator and scientist! Once again, he has been recognized by Medical Imaging as one of the Top 10 Nuclear Medicine Physicist Researchers. Dr. Oshinski's laboratory has been busy. Graduate student Brandon Fornwalt received an Outstanding Paper Award in a Georgia Tech competition, and Dr. Daniel Karolyi has been granted an RSNA Resident

Research Award to pursue his work with Dr. Oshinski on fluid dynamics modeling in intracranial aneurysms. We also recognize the continued service to our department of many of our team, some for as long as 30 years .

Emory Radiology had a strong presence at the recent Association of University Radiologists (AUR) meeting, despite the surprise late snowfall in Denver. Our faculty, training program staff, and chief residents participated in thoughtful discussions about educational issues facing our field, and members of our faculty engaged in career development activities through the Kodak-

AUR Management Program and the AUR-Philips Faculty Development Program.

Radiological techniques and radiologists' expertise are playing a growing role in the teaching of medical students. Next month the new Emory Medical School Education Building will open in preparation for shepherding in a new curriculum this Fall. This state-of-the-art facility will be a model environment for undergraduate medical teaching. With the guidance of Dr. Mark Mullins, our Director of Medical Student Education, imaging will be increasingly incorporated into student learning.



Please remember that National Nurse's week is May 6 -12. This is an ideal time to thank our wonderful nurses for their hard work and dedication.

Carolyn Cidis Meltzer, MD
Chair of Radiology

Awards & Recognition



Ernest Garcia, Ph.D.
Professor of Radiology
Director, Nuclear Cardiology R&D Lab

Emory's Top Innovators & Inventors

Dr. Garcia was chosen as one of four of Emory's Top Innovators and Inventors. In addition to an award ceremony, he will be participating in a moderated discussion concerning "Translating Ideas into Products" on May 8, 2007.

Top 10 of Nuclear Medicine Physicists/Researchers

In the April Issue of *Medical Imaging*, Dr. Garcia has been voted among the Top 10 of Nuclear Medicine Physicists/Researchers in the industry for the second year in a row. This recognition is a result of a poll of over 600 Medical Imaging readers. www.medicalimagingmag.com

Arthur Stillman, M.D., Ph.D.
Professor of Radiology
Director of Cardiothoracic Imaging

The American College of Radiology (ACR) has recently appointed Dr. Stillman as Chairman of the Cardiac CT Angiography Committee for the Commission on Quality and Safety.

Brandon Fornwalt
Graduate Student in Radiology Research
Outstanding Research Paper

Brandon Fornwalt, an MD/PhD student working with Dr. Oshinski, has been awarded the Outstanding Research Paper for his paper entitled "Cross-correlation Measures of Dyssynchrony are Superior to Current Clinical Parameters: Validation in Structurally Normal Pediatric Hearts" in the Georgia Institute of Technology Science Applications International Corporation student paper contest sponsored by Science Applications Incorporated.

In Memory

Remembering Ioannis (Yanni) Constantinidis

Yanni Constantinidis, former Associate Professor of Radiology, Division Director of Radiological Sciences, Associate Director of Fredrick Philips MR Research Center, and Director of the Imaging Core for the Center of Behavioral Neurosciences, passed away unexpectedly at age of 46 at his home in Gainesville, Florida on April 16, 2007.



Dr. Constantinidis was born in Thessaloniki, Greece, and came to the United States in 1978 to attend Northern Illinois University in Dekalb, IL. After undergraduate and graduate studies at Emory, he earned a doctorate from the University of New Mexico. He did post doctoral research at the Johns Hopkins University in the field of magnetic resonance imaging and spectroscopy.

Dr. Constantinidis worked in the Radiology Department at Emory University from 1989 to 2001, and developed a highly successful career as a researcher and an administrator. In 2001 Dr. Constantinidis moved to Gainesville, Florida to further develop his research at the University of Florida. He was very enthusiastic about research, an

energetic leader of the division and very much involved in clinical MRS services.

Dr. Constantinidis developed a field-leading research group using MRI and MRS based cellular imaging approaches for

tissue cell engineering aimed at the development of a bioartificial pancreas (<http://www.medicine.ufl.edu/endocrin/constantinidis.asp>, <http://www.scienceandsociety.emory.edu/scienceinyourlife/ioannis.htm>, http://www.whsc.emory.edu/_pubs/momentum/2000fall/imitation.html). He had many publications in peer reviewed journals and was a regular grant reviewer, serving on several NIH study sections. The last two successful NIH grants he received at University of Florida were rated in the top 2% of all grants submitted.

Dr. Constantinidis was awarded tenure and full professorship posthumously by the University of Florida last week.

Dr. Constantinidis was a warm, gregarious person and enjoyed time with friends and colleagues.

He was a devoted husband, father, and recently also soccer coach, who could often be seen playing outdoors with his children.

Dr. Constantinidis was one of the original members of the Frederik Philips MR Research Center, and sadly, the first to leave us. He is remembered dearly by many colleagues and friends in the Department.

Yanni is survived by his wife Jenny Dorley, son Alexander, 8, and daughter Zoe, 6, of Gainesville and his mother Rodopi Konstantinidou, sister Amailia Spiliakou, and nephew Konstantinos Spiliakos of Thessaloniki, Greece.

A memorial service was held on Tuesday April 24, 2007 at the United Church of Gainesville, attended by many of his colleagues and friends including current and former Radiology faculty from Emory.

Donations in memory of Yanni may be made in to the Juvenile Diabetes Research Foundation, c/o Dr. L. Kennedy, Division of Endocrinology, P.O.Box 100226, Health Science Center, Gainesville, FL 32610-0226.

Contributed by
Hui Mao and Marijn Brummer

NEW AND EXPANDED PROCEDURES

RadNet Prototype Unveiled

As part of Emory's Electronic Medical Record (EMR) initiative, Cerner RadNet Radiology Information System (RIS) has been selected to replace the current IDXRad RIS. The RadNet project has been in high gear since its kick-off in early January. During this time, several workgroups have been collaborating on system design. On April 11th, thirty seven radiology team members from across campuses and modalities attended the RadNet prototype demonstration. The demonstration provided attendees an initial look at the basic functionality and features of the system. During the upcoming weeks, the RadNet workgroups will be focused on finalizing the system design. Look for future articles regarding RadNet project milestones.

- Mo Salama

GRANT OPPORTUNITIES

Comprehensive Neuroscience Center General Support Grant for Integration Activities

The plans for the Comprehensive Neurosciences Center (CNC) element of *Vision 2012* have been developed and its success will be measured by the level of integration we can achieve across the WHSC for Neurosciences. The CNC will consolidate neurosciences activity and cultivate greater synergy among biomedical research, clinical research and clinical care. At the centerpiece of the initiative are two core strategies – foster translational research and develop integrated, patient-centered clinical care models. The CNC will be comprised of multiple disease-focused centers and encompass a vast array of sub-specialties, providers, sites, and partners.

You can be an active member of this development by submitting a proposal for CNC General Support Grant for Integration Activities.

This seed grant will be used to support new

models for research, education, and clinical delivery integration for the Phase I programs of the CNC.

The Phase I programs include:

- Alzheimer's Disease
- Parkinson's Disease
- Stroke
- Childhood and Adolescent Mood Disorders

Proposals should be 1-2 pages and should be submitted electronically by May 31, 2007. Proposals will be reviewed by a subcommittee appointed by CNC leadership. Awards will be funded in the amount of \$10,000 to \$40,000 per grant.

For complete details contact Aileen Reischl at aileen.reischl@emoryhealthcare.org of the Strategic Planning Office.

Breast Cancer Research Program

Funding opportunities are available for varying degrees of experience through the Breast Cancer Research Program. These Congressionally Directed Medical Research Programs (CDMRP) include the Era of Hope Postdoctoral Award, Era of Hope Scholar Award and the Idea Award, to name a few. Though Breast Cancer Research experience is not necessary for all programs, you must exhibit passion and vision in the pursuit of a career in this field. Many of these opportunities have quickly approaching deadlines and require immediate action. For more details [visit: http://cdmrp.army.mil/funding/bcrp.htm](http://cdmrp.army.mil/funding/bcrp.htm)

Woodruff Fund Proposal

The FY 08 Woodruff Fund proposals should support the strategic focus initiatives of *Vision 2012*, and should drive leveraging opportunities to enable the Woodruff Health Sciences Center to achieve its *Vision 2012* objective of "Top 10" status as an academic health center. Highest consideration will be given to those proposals that have direct linkage to the *Vision 2012* strategic focus areas.

Guidelines:

Proposals should be no longer than five pages, including the line-item budget and narrative. Each proposal should be e-mailed as an attachment to Trish Haugaard, Assistant Dean for Research Administration, at patricia.haugaard@emory.edu no later than May 11, 2007 for internal review.

Proposals must include:

- one-page Executive Summary
- Support of the *Vision 2012* Strategic Plan
- narrative of the exact purpose of the work
- description of leverage opportunities
- summary of staff involved
- list of funding sources
- line-item budget and budget narrative

For detailed information contact:

Patricia J. Haugaard
Assistant Dean for Research Administration
Emory Univ. School of Medicine
404-727-3774
patricia.haugaard@emory.edu

Current Research

Multi-Detector Row CT of Abdomen and Pelvis: Optimization of Contrast Dose Based on Patient Weight.

Contributors: Unni K Udayasankar MD, FRCR,
Jianhai Li MD, William C Small MD, PhD

Can routine contrast-enhanced multi-detector row CT (MDCT) of the abdomen could be performed with the contrast dose optimized to patient weight?

Preliminary findings: Volume of contrast used in routine abdomino-pelvic MDCT could be modified based on body weight

Significance: MDCT studies of smaller patients can be performed with much less contrast dose compared to standard dose protocols.

Role of Spectral Presaturation Attenuated Inversion-Recovery (SPAIR) T2 Fat-suppressed MR Imaging in Active Inflammatory Bowel Disease.

Contributors: Unni K Udayasankar MD, FRCR,
Thomas Lauenstein MD,
Diego Martin MD, PhD

Evaluate fat-suppressed (FS) T2-weighted (T2W) spectral presaturation attenuated inversion-recovery (SPAIR) imaging in conjunction with post-gadolinium FS T1-weighted (T1W) MRI in active inflammatory bowel disease

Preliminary findings: FS T2W SPAIR images showed higher specificity in Crohn's activity assessment when compared to gadolinium enhanced T1W sequences.

Significance: MRI may be used to differentiate active inflammatory disease from fibrotic disease

CHECK IT OUT

Recently Released Publications

Numburi UD, Chatzimavroudis GP, Stillman AE, Lieber ML, Uber AE 3rd, Kalafut JF, White RD, Halliburton SS. Patient-specific contrast injection protocols for cardiovascular multidetector row computed tomography. J Comput Assist Tomogr 2007; 31:281-289.

Eschenbach S, Pope TL Jr. Scleroderma with Calcinosis. Applied Radiology 2007; 3: 32-35.

Sirineni GK, Stillman AE. Understanding the heart: CT and MRI for coronary heart disease. J Thoracic Imaging 2007; 22:107-113.

Stillman AE. What has happened to cardiac MRI? J Am Coll Radiol 2007; 4:224-226.

Low Dose Non-Enhanced Head CT Protocol for Follow-Up Evaluation of Children with Ventriculo-Peritoneal Shunt: Effect on Image Quality and Radiation Dose.

Contributors: Unni K. Udayasankar MD, FRCR,
Kiery Braithwaite MD, Marioula Arvaniti MD, William C Small MD, PhD,
Susan Palasis MD

Can low dose follow-up CT study provide relevant information in patients with hydrocephalus and ventriculo-peritoneal shunts?

Preliminary findings: Low dose follow-up head CT provides relevant information in children with ventriculo-peritoneal shunt with a substantial reduction in radiation dose (mean dose reduction of 63%)

Significance: A low dose CT scan may replace standard dose study without affecting visualization of pertinent findings in children scanned for ventriculo-peritoneal shunt evaluation.

Effect of Tube Potential on CT Histogram Analysis of Adrenal Masses

Contributors: Unni K Udayasankar MD, FRCR,
Jianhai Li MD, William C Small MD, PhD

Do different tube energy levels alter attenuation characteristics and CT histogram analysis of adrenal masses?

Preliminary Findings: Adrenal adenomas showed a significant increase in percentage of negative pixels at low tube voltage (80kVp) when compared to 140 kVp

Significance: Non-contrast CT histogram analysis using dual energy mode may help characterise adrenal masses and preclude subsequent studies including contrast CT and washout studies.



STRIVING FOR EXCELLENCE

The Emory Experience

In the last century, our society has evolved from product seeking consumers to service oriented customers. As this century kicks off, another evolutionary era brings the experience focused clientele. What this means to us in health care is that the patient now takes for granted what we do and looks towards how we go about doing it.

If a friend or colleague invites you to their home for dinner, you expect more than the food. You expect your host to be hospitable. In the same way, our patients already know that they are coming to Emory to get healthier. They are, however, focused on how we make them feel while they are here.

We therefore must take ownership of our patients' experience at Emory. We must act like hosts in our homes rather than servers at a fast food parlor. We must make them feel that we are serving them, not

performing a job on them; that they are the subject of our attention, not the object of our tasks.

We don't expect our hosts to tell us what they went through to prepare for our visit. Similarly, our patients don't want to hear our behind the scene complex processes and how our day is going. So, let's make the patient feel that it is all about them.

Let's take the time to make eye contact, to introduce ourselves, to help them find their way, to let them know what to expect. Let's show our patient that we are engaged in welcoming them, that we are here for them not because of them, that we care about them not just for them. Let's strive not only to satisfy our patients with the service but to delight them with The Emory Experience.

- Habib Tannir, M.S.
Administrative Director of
Imaging Services

2007 Service Award Honorees in Radiology

The success of Emory is directly related to the contributions of individuals that make up the organization. Today we take a moment to express our gratitude and appreciation to the team members listed below as they reach a milestone in the Emory careers for their years of dedication and loyal service.

5 years

Robin Bailey, *MRI Tech*
Crystal Booker, *Technologist*
Tynisha Cheatham, *Coordinator*
Timothy Clarke, *Technologist II WEO*
Roberta Cornwell, *Patient Care Assistant*
Abayomi Daniel, *Transportation Attendant*
Ellen D'Orsi, *Research Nurse*
Lisa Floch, *Ultrasound Supervisor*
Gerald Foster, *File Room Assistant*
Chandra Gaddis, *Film Assistant*
Liji George, *Registered Nurse III*
Takeya Goosby, *Medical Records Assistant*
Daphane Groves, *Medical Assistant*
Rhonda Hardeman, *PSC II*
Bertukan Kedir, *Technologist II*
Christine Lemon, *Technologist*
Harriett Linder, *PSC II*
JoAnn Marshal, *PSC II*

Tiffany McLaughlin, *Tech Aid*
Kyong Min, *Technologist*
Barbara Stone, *Imaging Control Assistant*

10 years

Randolph Bethea, *Manager (CLH)*
Cheryl Carter, *Medical Secretary*
Regina Dunkley, *Sr. Certified Coder*
Jeff Fulkerson, *Sr. OP Coder*
Michelle Meeks, *Registry Technologist*
Traci Perry, *Film Assistant*
Vencent Rollins, *CT Technologist*
Neyra Skipper-Davidson, *Registry Technologist*

15 Years

Donna Dalton, *RT Technologist*
Laura Emamjohakashan, *Mammography Technologist II*
Martha Howard, *Radiology Library Assistant*
Mary Howell, *CT Technologist*

Virbala Jain, *Sr. Coder*
Chris Kubik, *Manager (TEC)*
Betty McCarty, *CT Technologist III*
Mildred Underwood, *Coding Specialist*

20 Years

Loretha Banks, *Coding Specialist*
Gloria Lewis, *Scheduler*
Evelyn Mitchell, *Transportation Attendant*
Gabriella Schlidt, *RT Technologist*
Clayton Solomon, *Pt Coordinator*
Vanessa Stiltner, *Technologist*
Brenda Stokes, *Patient Care*
Jane Vitali, *Manager (TEC)*

25 Years

Deborah Harris-Copland, *Scheduler*
Alice Jones, *Office Manager*
Barbara Walton, *Film Library Supervisor*

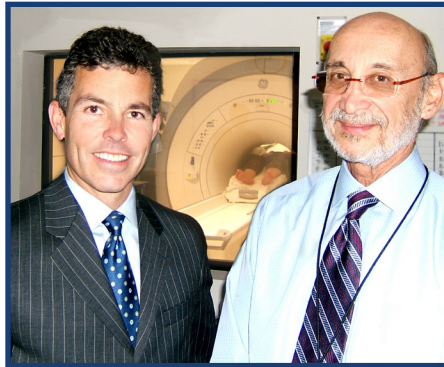
30 Years

Bobbie Burrow, *MRI Supervisor*
Angie Williams, *Research Nurse Supervisor*

*This list includes the names of those who reached a milestone anniversary in 2006.

TOUR OF PROGRESS

Last month Mark Vachon, CEO of GE Healthcare Global Diagnostic Imaging, toured the Emory campuses observing the use of GE technologies. He was particularly interested in the implementation of the 1.5T MRI that we utilize the latest GE platform HDx, which was installed at Executive Park last January. This is the first of a two MRI purchase that was inked last December. The second MRI, a 3T, will be lifted to the 4th floor of Executive Park by crane early this month.



Mr. Vachon's keen interest in Academic Health Centers brought him to Emory to check on the progress of the implementation and renewed commitment to Musculoskeletal and Neuro-spine Imaging.

Dr. Terk, the Director of Musculoskeletal Imaging, had a chance to meet with Mr. Vachon to review the current performance of the 1.5T MRI unit and discuss areas of advancement for MRI imaging. Dr. Terk's research of cartilage, bone marrow and high spatial resolution musculoskeletal imaging lead the pair into an exploratory conversation related to the development of body coils and advanced imaging techniques.

GET INVOLVED

National Nurses Week

Appreciation for all nurses nationwide will take place May 6-12 during National Nurses Week.



This week of recognition ends on May 12th each year, marking Florence Nightingale's birthday. She is recognized today as the founder of modern nursing, in tribute to her contributions that established the principles of nursing.

In a 2005 Gallup Poll, the nation's nurses ranked first for their honesty and integrity, with 82 percent of Americans rating them "high" or "very high".

To read more, visit: <http://nursingworld.org>

Action Cycling 200

Join your Emory colleagues on May 19-20, 2007 for the Action Cycling 200 bike ride to support the Emory Vaccine Center's world-renowned AIDS vaccine research. Volunteers, riders, and crew are needed. Emory will pay the registration fee (\$90) for the first 20 Emory riders who sign-up. Contact Alex Brown, Director of Development for the Emory Vaccine Center, at 404-712-4145 or babrown@emory.edu to learn more.

<http://emory.hr.emory.edu/allstaff/C200TeamEmoryFlyer.pdf>

Radiology Grand Rounds

May 2007

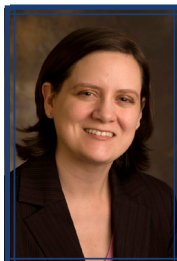
Wednesdays 7:30 - 8:15 a.m.
Emory University Hospital Auditorium

- 5/2/07 **Laurie E. Gianturco, M.D.**
Baystate Medical Center
The Role of PET/CT in the Staging of Bronchogenic Carcinoma
- 5/9/07 ~ No Lecture ~ *Due to ARRS*
- 5/16/07 **Carl Fuhrman, M.D.**
University of Pittsburgh
Congenital Lung Disease in Adults
- 5/23/07 **Barton Branstetter IV, M.D.**
University of Pittsburgh
Uses and Abuses of PET/CT in the Head and Neck
- 5/30/07 **Stuart E. Mirvis, M.D.**
University of Maryland
MDCT-A Blunt Cervical Vascular Injury

Arrive at 7 am for a Complimentary Breakfast



New Faces & Appointments



Amy Comeau

Sr. Marketing Manager for Radiology

Amy Comeau joins Radiology having most recently served as the Associate Director of News & Information for the Nell Hodgson Woodruff School of Nursing. She originally came to Emory with more than ten years experience in marketing, PR and communications. In the Emory community, Amy is currently serving on the President's Commission of the Status of Women.



Greg Pennington, MBA

Physician Liaison

Greg Pennington will be working with Radiology throughout the Emory Healthcare system. He will be utilizing his 5 years of experience in health care operations, marketing, and business development to strengthen relationships with referring physicians.



Matthew R. Dunn, B.M.Sc., R.T.

Instructor, Medical Imaging Program

Matt Dunn, a graduate of the Emory University SOM, has returned after gaining experience as an Instructor for PACS Specialist and Radiologic Technology programs at Ogeechee Technical College. Matt has been involved with various organizations and currently serves as President of the Association of Educators in Imaging and Radiologic Sciences (AEIRS).



Tammi Teeters-McDade

Program Coordinator

Tammi Teeters-McDade has extensive experience in the area of Residency and Fellowship Program organization from the University of Pittsburgh Medical Center and will be using that knowledge to enhance our programs here at Emory. She has been a presenter for the National Center for Evaluation of Residency Programs over the last two years at the Coordinators Workshop.



Stanley Bennifield

TECH OPS Administrative Assistant

Stanley Bennifield has been with Emory for the past year assisting at Grady Hospital. With his transition to Emory Healthcare, Stanley plans to build on his previous experience with computer repair and programming by pursuing certifications and enhance his existing skill set.



Frederic E. Davis, RT(r)

Interventional Radiology Technologist II

Frederick Davis received his training in Radiological Sciences and Interventional Radiology from the US Army. Though his army career he has also gained experience as a computer systems analyst and laser safety officer. Most recently, Fred contributed to the team at Ryder Trauma Center, the largest level I Trauma Center in the Southeast.



Stephanie West, RT(r)

Interventional Radiology Technologist

Stephanie West has joined the Emory University Hospital after gaining experience at Grady Memorial Hospital.



Mike Merrill, RT(r)

Interventional Radiology Technologist III

Mike Merrill joins Emory as a seasoned Technologist, with 28 years of experience. He recently relocated after spending 13 years in Tampa, FL. Mike has also spent time using his talents as a member of the US Air Force.



Dennis E. Smith, Jr., RT(r)

Interventional Radiology Technologist

Previous to joining the Emory Radiology Department, Dennis Smith, served in the US Army, facilitating in the area of Diagnostic Radiology.



Shavon Thomas, B.S., RT(r)

Interventional Radiology Technologist

Shavon Thomas has brought 12 years of CT experience to the Interventional team at Emory University Hospital.

Look for a new edition of
the Rad Report
the first full week of every month.