

EMORY RadReport

It's what's on the inside that counts!

December, 2008

The Flight of Angels

The sky is filled with airplanes transporting cargo, animals and people. Some of these planes are earning their halos as volunteers for the organization Angel Flight. Dr. Scott Bartley, Assistant Professor of Radiology in the division of Nuclear Medicine and Molecular Imaging, is the pilot of one of these planes.



Dr. Bartley uses his own plane and fuel to fly people with medical needs to a location within the South East that best meets their needs.

Angel Flight is a non-profit organization that provides free air transportation for people with a medical need that can't be filled in their local area. Angel Flight primarily serves patients who are traveling from, to or through the states of Georgia, Alabama, Mississippi, Tennessee, and the Carolinas. (<http://www.angelflightsoars.org>). This organization is devoted to ensuring that the cost of transportation does not prevent someone from receiving medical care.

As a member of this organization, Dr. Bartley uses his plane (and fuel) to transport medically stable patients to a facility that best meets their needs. Having gained his pilot's license in 2005 and his instrumentation certification in 2006, Dr. Bartley became interested in the group after they presented at one of his aviation meetings. Shortly after this meeting, he ran his

first Angel Flight in the spring of 2007. While flying to Cincinnati, Ohio, he learned his first lesson of taking on passengers - always carry air sick bags in your plane.

Being a member of Angel Flight does not require that the pilot be a doctor. Yet Dr. Bartley has found that his medical knowledge has helped to sooth the minds of his passengers. In one case, the father of the patient was more at ease after discussing his child's condition with Dr. Bartley during the flight.

In addition to his work with Angel Flight, Dr. Bartley is very involved with the Radiology Department. During a stay in Chicago, he participated in a Residency Review Committee (RRC), that worked with the ACGME to establish the new residency regulations in 1999. When he arrived at Emory, Dr. Bartley was armed with the tools to transform the existing Nuclear Medicine residency program into a clinical

competency base, updated program to follow changing ACGME regulations. His dedication to education has been rewarded with the achievement of Teacher

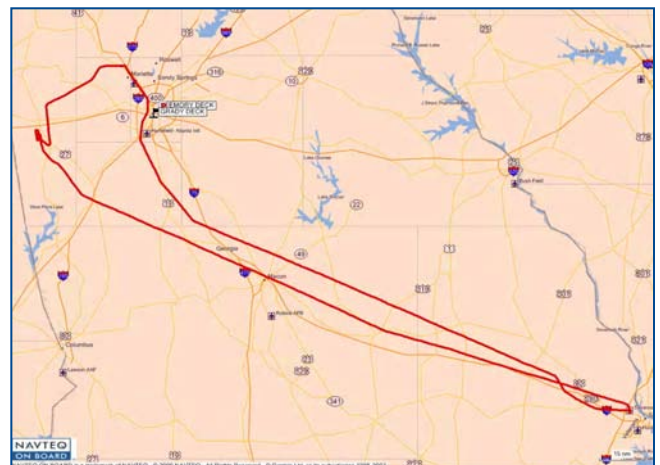
of the Year, awarded by the Nuclear Medicine Residents in June of 2007. Dr. Bartley considers this the highlight of his Emory career stating, "I always wanted people to feel like I was providing them with something useful."

Based out of DeKalb Peachtree (PDK) Airport, Angel Flight is open to any pilot who is willing to volunteer the time, plane and fuel. Some corporate

In this Issue:	
Letter from the Chair	2
Awards & Recognition	2
Rising Residents	3
In Memory	3
Striving for Excellence	4
RadNet & PACS Update	5
Check It Out	6
Getting to Know You	6
Get Involved	7
New Faces & Appointments	8

jets also participate in this program. The organization is open to anyone who would like to volunteer to fulfill such duties as fundraising, loading freight (as they did for hurricane Katrina relief) and also make flight plans. You can sign up on-line, by e-mail - earthangel@angelflightsoars.org - or call 770-452-7958.

- Monica Salama
Communications Specialist



On his last Angel Flight, Dr. Bartley flew 700 miles round trip from Atlanta to Savannah.

Letter from the Chair

Dear Colleagues,

Congratulations to our new chief residents, Michael Naumann, William Slater, and David Wicker. They have demonstrated a willingness to take on extra duties in service of their colleagues to enhance the quality of the Emory residency experience. We are also grateful to Dan Karolyi, Sarah Erickson, and Milan Mehta for their leadership and dedication to the department over the past year as chief residents.

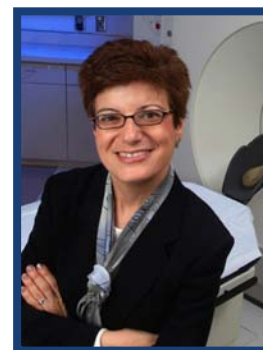
There have been many changes at Grady lately, led by new CEO

Michael Young. Mr. Young's bold vision for Grady, coupled with a large infusion of capital funding, has given Grady new life. Radiology equipment requests totaling approximately \$18 million have recently been approved, which should result in major upgrades to the current infrastructure and capabilities of our practice at GMH.

Once again, our department was well represented at the annual gathering of the Radiological Society of North

America (RSNA) in Chicago. Whether you made the trek to the windy city to present a paper, lead a refresher course, evaluate a new radiographic device, or take a shift at the Emory Radiology booth -- or stayed back in Atlanta to ensure seamless patient care -- you contributed to our department's journey toward success as a destination for the highest quality clinical, research, and teaching activities.

Looking forward to sharing some seasonal cheer at the



annual department holiday party on December 19 at Atlanta's Fox Theatre!

Best to all,

Carolyn Cidis Meltzer, MD FACR
Chair of Radiology

AWARDS & RECOGNITION



Michael Terk, MD
Professor of Radiology

Ioannis Sechopoulos, PhD
Assistant Professor of Radiology



Linda Burr
Research Project Coordinator,
Supervisor



Sidna Pinto
Assistant to Dr. Carolyn Meltzer
Program Associate, Senior

Editor's Recognition Award

The Radiological Society of North America (RSNA) has awarded Drs. Terk and Sechopoulos this special distinction in recognition of their outstanding service as a reviewer of scientific manuscripts submitted for publication in *Radiology*.



Deborah Baumgarten, MD, MPH
Associate Professor of Radiology
Director, Abdominal Imaging Fellowship

Grand Rounds Highest Faculty Attendance

During the 2007 Academic year, Dr. Baumgarten rarely missed a Grand Rounds presentation. Her dedication originates from the belief that Grand Rounds is a time for all members of the department to get together to enhance their knowledge. She also likes to set a good example for the residents to encourage lifelong learning.

Supervisor Development Program Certificate

After taking on their leadership roles, Linda and Sidna were selected to participate in the Supervisor Development Program. This program focused on leadership development, building and managing relationships, and the processes of Human Resources and Legal Policies. To be selected for this course participants, must be endorsed by their supervisor and be in or progressing to a supervisory role.

This program and many others are offered by Emory Human Resources. To view options for your professional growth, go to www.hr.emory.edu, and access the employee toolkit, click on Learning Opportunities under the Professional Development section.

Lori Ciani

Senior Medical Imaging Student

Lambda Nu Scholarship

Lori has been awarded a scholarship from Lambda Nu – The National Honor Society for Medical Imaging Science. Lori will graduate from Emory's Medical Imaging Program in May 2009. Her specialty is CT.



RISING RESIDENTS

Newly Appointed Chief Residents



Mike Naumann, MD
Chief Resident

After receiving a BS from Notre Dame and his MD from Baylor College of Medicine, Dr. Naumann came to Emory for his transitional year internship. Continuing his career at Emory in the Radiology Residency Program, he helped design the pre-call exam for 1st year residents. He also participates in the education of others through Medical Student lectures. Dr. Naumann is on the Resident and Fellow Section (RFS) membership committee for ACR and a member of the Atlanta Angio Club.

Each year, new Chief Residents for our Diagnostic Radiology Residency are selected using a vote of the faculty and residents. Although there are no specific criteria, prior participation in residency program activities and leadership qualities are typical attributes. Once selected as Chief Residents, they take on numerous duties that include coordinating various resident activities, such as the call schedule and the rotation schedule, plus serving as a liaison between the faculty and residents on a variety of issues. Success as a Chief Resident requires the ability to balance being a peer to and a supervisor for the residents. In addition, these Chief Residents are members of the Residency and the Resident Selection Committees.

Over the last year, Chief Residents Sarah Erickson, MD, Dan Karolyi, MD, PhD and Milan Mehta, MD have contributed a great deal to the success of our program. They have helped innumerable residents and faculty, including myself, in countless ways. As they move toward the end of their residency here at Emory, three new chief residents have been selected to lead our program: Michael Naumann MD, William Slater, MD and David Wicker, MD. On behalf of Deborah Baumgarten, MD, MPH, and Bruce Baumgartner, MD, I want to say thank you and congratulations to all of them.

- Mark Mullins, MD, PhD
Vice Chair of Education
Director of Radiology Residency Program



William Slater, MD
Chief Resident

As a Graduate Medical Education Committee (GMEC) representative for radiology over the past year, Dr. Slater is staying active with the department. Outside of Emory, he is a member of ACR and RSNA. He is an advocate of education and currently teaches some of the medical students through the lecture series. Ideally, he would love to continue his education at Emory with a Fellowship in either IR or Neuroradiology.

Jack E. Peterson, Ph.D., Remembered

Professor Emeritus Jack E. Peterson, Ph.D., died on November 9, 2008. Dr. Peterson retired in 1997 after a twenty-five-year affiliation with Emory University. Before coming to Emory, Jack worked in technical publications in the aerospace industry. When such work declined in the early 1970s, he came to Emory as part of a special program designed to help former aerospace workers apply their talents in the medical sciences.



He served as Program Director for the Nuclear Medicine Technology Program, Coordinator of the Nuclear Medicine Learning Center, Operations Manager of the Magnetic Resonance Education Center, and most recently as the Coordinator of the Medical Student Education Program in Radiology and the Radiologic Technology Continuing Education Program.

In the classroom he was a talented teacher who combined knowledge, wit, and excellent presentations to help his students understand many of the complexities of the sciences associated with medical imaging.

Within the Department of Radiology, Jack was probably best recognized as a unique source of information on a variety of topics, given his broad knowledge of the sciences and his interest in modern technology. He helped many people understand computers and develop computer applications. He has used his knowledge of statistics to be a valuable collaborator with other investigators.

Jack lived with his wife Mary in Decatur, Ga.

— Perry Sprawls, PhD, Professor Emeritus



David Wicker, MD
Chief Resident

Dr. Wicker received his undergraduate degree from Cornell University and then continued his education at Medical College of Georgia where he received his MD. In the future, he is planning to do an MSK fellowship. Dr. Wicker is interested in technology that helps to streamline workflow and increase efficiency. He is involved in the Radiology community as an active member of RSNA, ARRS and ACR.

At Emory, he completed the Master of Medical Science degree with a specialization in Nuclear Medicine and then went to Memorial Hospital in Sarasota, Florida as the Director of the Nuclear Medicine Department and Instructor in Nuclear Medicine at nearby Hillsborough Community College. In 1975, he returned to Emory as the Coordinator of Continuing Medical Education in the Physician Associate Program. His Ph.D. from Georgia State University in Educational Administration with specialization in higher education provided the opportunity for him to contribute to many educational programs, especially within the Department of Radiology.

STRIVING FOR EXCELLENCE

Survey Says...

Employee engagement (Gallup) survey: "In the last 7 days I have received praise or recognition for doing good work?"

The survey results showed this to be a low scoring question throughout Emory Healthcare and as a result it has been chosen by all entities as an area of focus. So how do we recognize each other? Does it only count when it comes from a supervisor or manager?

First, what is recognition?

Webster's Dictionary defines recognition as special notice or attention. Each of us has the power to make someone feel special. Go ahead and compliment someone on the way they dealt with an issue, helped a patient get to their next location or just for the job they do. A recent study conducted by Northwestern University found that there is a direct link between employee satisfaction and customer satisfaction.

Employee happiness is reflected in job performance, which doesn't go unnoticed by patients. Do you ever find yourself watching employees; whether you're shopping, taking your car in for service, or when you or a family member becomes the patient?

HIPAA and Research

The Use and Disclosure of Protected Health Information for Research policy and procedure outlines the specific ways Emory can use patient information for research purposes. It can be confusing since there are some situations where protected health information (PHI) can be used without the patient's authorization, and then there are some situations when an authorization is required or a waiver is required.

Whether you need an authorization or not, it is your responsibility to know the rules and regulations before using PHI for research purposes.

Generally, EHC must obtain and/or be provided with an authorization for uses and disclosures of PHI for all research purposes; however, patient authorization is not needed to use or disclosure PHI in the following instances:

The PHI requested is that of deceased patients and is for use in research, as long as certain written assurances are provided;

The PHI is requested preparatory to research, as long as certain written assurances are provided;

The researcher has been granted a full or partial waiver of the patient authorization requirement by an appropriate institutional review board (IRB);

The PHI is de-identified (See Emory Healthcare policy on de-identified PHI); or

The PHI requested is de-identified except as to the listing of town, city, state, zip code, age, sex, and the researcher enters into an appropriate limited data set agreement.

Electronic, paper or any other form or medium of PHI may only be accessed for research purposes by following the rules set out in this policy.

To read the Emory Healthcare research policy and procedure, go to: <http://euhnotes.eushc.org/ehc/compolic.nsf/e78c213fc993d10a852569300065467f/3beb24e8b46fd6fd85256caf0073e944?OpenDocument>

If you haven't taken the time to notice, look around and you will be able to distinguish the people who just go through the motions from those who enjoy the job they are doing.

Everyday we encourage patients to fill out the "I saw you do something good cards" that the customer service team has issued, yet the days seem so busy that we often don't take the time to even say a simple "thank you" to each other. Now is the right time to change that and start making that effort! We all should take the time to recognize each other; don't wait for it to come from a supervisor or manager.

How do we know when someone deserves to be recognized?

Emory Healthcare recognizes employees for their years of service. In daily huddles we ask for "WOW" stories and read compliment cards that patients have filled out. Any time a staff compliment is received it should be immediately recognized and sent to that person in an e-mail; and make sure everyone is copied from their supervisor to Habib.

How do we recognize employees?

An earlier article noted that leadership needs to make rounds and interact with staff. You can observe the staff in action

with patients, families and co-workers. As well, co-workers and colleagues should acknowledge their peers. Thank an employee or comment on the way they talked with a patient; whether it was as simple as giving directions or taking the time to show compassion for what they are going through. It doesn't take a lot of time and it will make you and the person you compliment feel good about the job you are doing.

In his book *1001 Ways to Reward Employees* Bob Nelson provides many ideas on simple, yet effective, approaches. Some of his ideas include stopping in at a project meeting and thanking everyone for attending, sending a letter of appreciation to staff, rewarding collective accomplishments whenever possible even if the reward is only juice and bagels.

Once we start expressing our appreciation for each other it will become second nature and we won't have to stop and think about it. Let's make recognition our first New Year's resolution beginning right now!



- Jane Vitali, BSRT, RT (R)(CV)
Assistant Director of
Imaging Services

TECHNOLOGIES MOVING FORWARD

Moving on to RadNet

After months of focused collaboration between Radiology and Information Services teams, we are nearing the highly anticipated go-live of RadNet, the new Radiology Information System. The go-live is scheduled for January 31, 2009. In the next two months, there will be a myriad of pre-go-live activities including testing, training, and go-live logistical planning. As training is critical to the success of the implementation, an impressive training program has been

designed to ensure that all users are proficient in RadNet and the new workflow processes prior to go-live.



The training program consists of five main tracks:

- **Patient access:** This training is focused on the front-end portion of our workflow and includes: scheduling, pre-cert, and front desk.
- **Exam Management:** This training track is focused on the technologist portion of the workflow including: vetting, and exam tracking
- **Interpretation Management:** This training is focused on the radiologist workflow for interpreting, dictating, signing, and add ending exams.
- **Technical Charging:** This training is focused on the technical portion of the charging for exams as well as supplies.
- **Professional Billing and Coding:** This training is focused processing radiology charges for professional and global services through IDX.TES. The target

audience is the radiology reimbursement services team.

Several types of training have been developed: hands-on training, web training and demonstrations.

The traditional hands-on training workshop sessions will accommodate approximately 10 users per training session. These training sessions will be facilitated by a superuser. Superusers have been selected from each section to lead training sessions prior to go-live as well as serve as the first line of support for users in their respective section at go-live and beyond.

The second type training is a self-guided web-based video training referred to as Multiviewer Panel (MVP) training. The MVP training program was custom developed by Cerner to meet Emory specific training needs.



This training enables users to conveniently complete training at their own pace and schedule. The MVP training will be accessible 24X7 through the Emory intranet.

In addition to the aforementioned training programs several demonstrations will be held at Grand Rounds, Noon Conference, and other events.

Please look for additional details on training sign-up and go-live details in upcoming issues of the Rad Report and the Imaging Informatics Bulletin.

- Mo Salama
Assistant Director of Imaging Informatics

The PACS Servers are here!

In late September the PACS project reached an important milestone, the PACS server hardware was delivered to the Emory data centers. The PACS servers will exist in both a primary data center at the North Decatur Building and a secondary off-site data center. This server configuration will enable us to dramatically reduce PACS downtime.

Since the servers have been delivered, the PACS project has been progressing steadily. Please look for updates on the PACS project in future editions of the RadReport.

- Mo Salama
Assistant Director of Imaging Informatics



The PACS servers arrived in October and are in the first state of installation.



Mo Salama is leading the PACS migration, the first step in bring the new system to Emory.

CHECK IT OUT

Delfino JG, Fornwalt BK, Eisner RL, Leon AR, Oshinski JN. [Cross-Correlation Delay to Quantify Myocardial Dyssynchrony from Phase Contrast Magnetic Resonance \(PCMR\) Velocity Data.](#) JMRI (2008) 28:1086-1091.

Delfino JG, Fornwalt BK, Oshinski JN, Lerakis S. [Role of MRI in Patient Selection for CRT.](#) Echocardiography (2008) 25:10, 1176-1185.

Sechopoulos I, D'Orsi CJ. [Glandular radiation dose in tomosynthesis of the breast using tungsten targets.](#) Journal of Applied Clinical Medical Physics 2008; 9(4):161-171.

GETTING TO KNOW YOU

Physician Liason

As an advocate for referring physicians and an avid supporter of patient care and quality, Greg Pennington represents Emory Radiology as he promotes our advanced technology and skilled Radiologists. Greg's role as our Physician Liaison requires that he maintains and builds a rapport with our referring physicians. He manages relationships with over 200 referring physicians in the Atlanta area and conducts at least 20 meetings per week to promote Emory Radiology and Emory Healthcare.

An element of Greg's work is to handle any challenges that may arise for our referral sources, and advises the Radiology Department so we can work to promptly resolve issues and assure patient and physician satisfaction. Greg cannot do this job alone. He works closely with our department administrators and managers to resolve issues as they arise. By functioning as a productive team, Emory Radiology is focused on obtaining the highest quality of care for our patients.

A large portion of Greg's time is dedicated to staying current with advancements in medicine that Emory Healthcare and Emory Radiology provide to the community. For a physician liaison to be effective, he or she must be able to provide timely and accurate information to the physicians they support. In addition to being knowledgeable about Emory Healthcare, Greg goes through annual compliance training focused on maintaining professional and ethical relationships with the medical community.

Greg is passionate about his position and what our Radiology Department has to offer our community. Greg mentioned that he "believes in the mission and vision of Emory Healthcare and Emory Radiology. I cannot go out and sell something I do not believe in. I enjoy what I do because I believe in the organization and its purpose. I like helping patients find their way to Emory."

With eight years of health care knowledge and five years of health care sales and business development experience, Greg is well qualified for his position that he has held with us for almost two years. He received his MBA and Bachelors of Business Administration (BBA) in Management from Georgia Southern University.

For additional information regarding Emory Healthcare's Physician Liaisons program, please feel free to contact Greg Pennington at 404-778-7735 or by e-mail at greg.pennington@emoryhealthcare.org



Greg Pennington has been building relationships with referring physicians since joining Emory Radiology in April of 2007.

- Alaina Shapiro
Communications Coordinator

PREPARING FOR 2009

Get your W-2 Online

Emory University, Emory Healthcare and Emory Wesley Woods Living employees can now receive their W-2 online. If you have signed up in previous years, you do not need to sign up again.

Here's How:

Visit www.w2express.com or call 1-877-325-9239.

- On the website, Enter "Employer Code" 11332 in the Login box and click GO.
- Enter your Social Security number (without dashes).
- Enter your PIN, which is the last four digits of your Social Security number plus your month of birth and the last two digits of your birth year; for example, if your Social Security number is 414495731 and your birth date is July 1972, your PIN would be 57310772.
- Pin Reset Enrollment – Skip or Continue – Provide E-mail addresses
- Select Consent for Online Delivery.
- Read the disclosure and Click on Test Now

- A sample W2 will show on your computer. If the sample W2 screen shows on your computer you will be able to access your W2 online from that computer. If the sample does not show then contact your local support to check your Adobe Acrobat Reader.
- Close the sample file and Click on "I saw the test W-2, read all of the important information above, and want to receive my original W-2 statement online"
- Complete the consent form with your primary (and secondary) email address, your mailing address, and your home/work number. Select "SAVE"
- A W-2 Online Access Consent will show. Double check the information then click on Confirm.
- Online W-2 Consent Receipt will show. You may want to print this screen by clicking on Confirmation Receipt. Then click "Logout"

Note: Your original W-2 will be mailed to your home address if you do not use the online service.

Follow the online instructions. If you have questions, contact Payroll at 404-727-6100.

GET INVOLVED

Join the Emory **ING** Marathon Team

Emory is a proud sponsor of the ING Georgia Marathon and Half Marathon on March 29th, 2009! Push yourself to a new level of fitness and join the EMORY TEAM for this amazing event. All Emory employees and immediate family members can join the EMORY TEAM and register at a discount.

REGISTRATION

1. Go to www.inggeorgiamarathon.com and click the "Register Online Today" button on the top left of the webpage.

2. Click "Register Now" and continue the registration process as indicated.

3. On the "Complete Form" step, select "EMORY TEAM" from the drop down menu. A team password is NOT required so please leave the password line blank.

4. On the "Submit Payment" step, please enter the below coupon code to receive the EMORY TEAM discount.

Full marathon discount code –
INGGAEMORY09 - \$65*

Half marathon discount code –
INGGAHALFEMORY09 - \$45*
If you have any additional questions, please contact Lindsay Mitchell via email at Lindsay.Mitchell@emoryhealthcare.org

Emory University Department of Radiology

Carolyn Cidis Meltzer, M.D.
William P. Timmie Professor & Chair
Associate Dean for Research

*Cordially invites you and your spouse/guest
to attend the Annual*

Holiday Celebration

Friday, December 19, 2008
7:00 p.m. to 11:00 p.m.

The Fox Theatre
(Egyptian Ballroom)
660 Peachtree Street
Atlanta, GA 30308

Please RSVP by December 12, 2008 to
Laura Padgett (404) 712-5497 or
LLPadge@emory.edu

*Complimentary reserved parking available at
The Georgian Terrace across from The Fox Theatre*

Radiology Calendar

Week of December 8, 2008

Wed., Dec. 10 –
Grand Rounds -
John Kaufman, MD
Aortic Stentgrafts
(Adventures in Big Red)

Thurs., Dec. 11 –
Research Conference
Hui Mao, PhD
Profiling Neurochemical Changes
in Alzheimer's Disease Using NMR
Based Metabolomics Approach

Week of December 15, 2008

Wed., Dec. 17 –
Grand Rounds -
TBD

Thurs., Dec. 18 –
Research Conference
Tracy Faber, PhD
Motion Correction of PET Brain
Images Through Deconvolution (Act I)

Week of December 22, 2008

No Conferences
- Holiday Break

Week of December 29, 2008

No Conferences
- Holiday Break

Week of January 5, 2008

Wed., Jan. 7 –
Grand Rounds -
Kimberly Applegate, MD
TBA

Thurs., Jan. 8 –
Research Conference -
Jeff Bulte, PhD
TBA

**For times & locations visit the website:
www.radiology.emory.edu**

Visit www.radiology.emory.edu/events-and-lectures for up-to-date event information.

NEW FACES & APPOINTMENTS



Joseph Bond

Transportation Attendant - ECLH

Joseph has spent the last 7 years working as a manager for contracting services and warehouses and is now a member of the weekend Radiology Services. Prior to coming to Georgia, Joseph lived in Germany, Korea, Texas, Ohio and Kentucky following his father's active Military career.



Theo Jones

Transportation Tech - ECLH

Theo's working experience includes 7½ years of patient transport services working with Phoebe Putney Memorial Hospital in Albany, Georgia. He also is a licensed and certified massage therapist as well as a neuromuscular therapist. In his free time, Theo enjoys traveling.



Julia Page Chappell

Radiology Tech I - EP

Julia is a graduate of The University of Louisiana at Monroe (ULM) where she received her Bachelors in Radiologic Technology. Julia recently moved from Louisiana to Georgia and enjoys spending time with her pet python, Mr. Bungle.



Daniel Thorogood, RT (R)

Rad Tech II - EP

Daniel's primary focus area is Physiatry at the Emory Ortho & Spine Center. He graduated as a Radiologic Technologist from West Central Technical College in Douglasville, Georgia. Outside of Emory, Daniel is training intensely for the Boston Marathon in April and the Iron Man Triathlon in October 2009.



Erin Desmond

Radiology Tech II - ECLH

Erin earned her BAS in Technical Studies from Valdosta State University. Her previous experience includes two years on evening duty at Grady Memorial Hospital. She is a member of the ASRT and ARRT. Outside of Emory, Erin enjoys traveling and listening to live music.



Gaye Ray, NP-C

Nurse Practitioner - EUH

Gaye will be assisting the patients and faculty in conscious sedation MR and research for Body MRI. She received her MS as a Family Nurse Practitioner from Georgia State University. Gaye is active in several professional organizations including AANP, UAPRN and AAP. She has previous experience in telemetry and public school child health.



Yvette Johnson

Transportation Attendant - ECLH

Yvette joins the Radiology Department after working at Crawford Long Hospital's Seasonings Café. Prior to joining the Emory community, she was an Assistant Manager in the Fulton County School System. Her future goals include taking Emory courses in Spanish and medical terminology.



Tammy Nikki White

Sonographer - ECLH

Nikki attended The Grady School of Radiologic Technology and The School of Diagnostic Medical Sonography at Grady Health System before starting her career in the imaging field. She gained experience as an x-ray technician prior to taking on her new position. Nikki stays active in the Radiology Community as a member of ARRT and ARDMS.



*Warmest Wishes &
Happy Holidays!*

Look for a new issue of
the Rad Report
the first full week of January.