

November, 2012

Fetal MRI: A Look Inside the Developing Fetus

Fetal MRI is an advanced, safe, non-invasive procedure that is offered through a program within Emory's Department of Radiology and Imaging Sciences at Children's Healthcare of Atlanta at Egleston. The program represents a collaborative effort between the Division of Neuroradiology and Pediatric Radiology and is led by Dr. Nilesh Desai, a pediatric neuroradiologist.

Fetal MRI is performed in the same way as any other MRI study and typically can be performed within 30 minutes for women in the second and third trimester of pregnancy. It has numerous indications, the majority of which pertain to the fetus's developing central nervous system. Some of the most common indications include enlargement of the cerebral ventricles (ventriculomegaly), abnormalities of hindbrain, congenital diaphragmatic hernias, pulmonary masses and complications of twin pregnancies. Despite its many indications, fetal MRI is not a primary screening tool. Instead, fetal MRI should serve as a test to further define a potential or known abnormality that is first identified by ultrasound and provides information

for management decision making or patient counseling.

Obstetrical MRI was first used in the early 1980's at which time the primary usage of the modality was restricted to placental and maternal pathologies. This was due to the fact that conventional MRI sequences used in those days were unable to adequately resolve the constantly moving fetus. In order to mitigate against motion, rather heroic

attempts were made in those early days including the injection of muscle relaxants directly into the fetal umbilical vein. Less invasive means were also used including the maternal administration of depressants such as valium. Because of this, early fetal MRI was understandably restricted to a select few individuals.

"Modern" fetal MRI was eventually born with the advent of ultrafast T2-weighted sequences that suddenly decreased slice acquisition times from numerous seconds to less than one second. The acquisition time for a single plane is now less than 30 seconds for most sequences, while still providing high-resolution, high-contrast images.

The Fetal MRI Program at Emory includes pediatric radiologists

Drs. Jonathan Loewen and Adina Alazraki. Since its launch in the Summer of this year, more than 20 fetal MRIs have been performed. The goal of the Fetal MRI Program is to provide the highest level of expertise possible and to provide families with an empathetic, informative imaging experience. For this reason, all patients who undergo fetal MRI establish a radiologist-patient relationship and meet with the performing radiologist before the exam to discuss it in detail. The entirety of the fetal MRI session is then proctored by one of the radiologists. After the study, the patient is counseled by one of the monitoring radiologists and informed of the findings, including the possible short and long-term implications for the unborn child. Emory's Department of Radiology and Imaging Sciences is one of the few institutions in the nation to provide such a complete point of care for families.

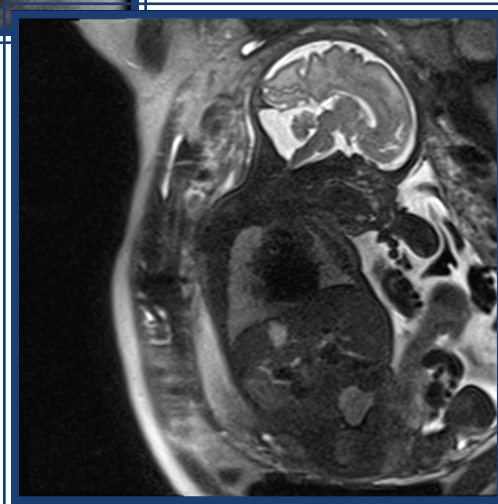
- Nilesh Desai, MD
Assistant Professor
Neuroradiology

In this Issue:

Letter from the Chair	2
Message from the Vice Chair for Research	2
Awards & Recognition	3
HR Tip	3
In the Know	4
Striving for Excellence	5
RSNA 2012	5-7
New Faces & Appointments	8



(Above) Fetal MRI (sag T2 HASTE) performed at 20 weeks gestation for ultrasound-identified ventriculomegaly demonstrates a large, unsuspected intracranial interhemispheric cyst with callosal agenesis and inferior vermian hypoplasia.
(Right) Fetal MRI (sag T2 HASTE) in early third trimester demonstrates prominent fluid posterior to the cerebellum consistent with mega cisterna magna, a normal variant. This benign diagnosis can sometimes be confused with more serious hindbrain malformations such as Dandy-Walker malformation.



LETTER FROM THE CHAIR

Dear Colleagues,

As many of you know, the Emory Department of Radiology and Imaging Sciences is embarking on a new strategic planning process. Our FY08 – FY13 Strategic Plan, which focuses on our people, practice quality improvement, the strength of our research programs, and communication, is in its last year. We have much to celebrate: extensive faculty and staff engagement and development programs, a leap in NIH funding ranking from 31st to 15th nationally, a fundraising infrastructure that fostered our Adopt-a-Resident program and new endowments, innovative programs like the Radiology Leadership Academy and Radiology Service Excellence Institute, and numerous quality initiatives.

While our journey to becoming a destination department has progressed

enormously over the past five years, the terrain ahead is even steeper. Indeed, there is much more to do, particularly in light of health care reform and market pressures that continue to impact each of our mission pillars. To ready ourselves for the road ahead, we have begun our next strategic planning process with considerable attention to understanding our changing environment. Several Fall Grand Rounds sessions on Health Care Reform were supplemented by a mini-retreat for departmental leaders with The Advisory Board's Imaging Team. Preparatory meetings followed by a day-long Strategic Planning Retreat have culminated in six teams comprising faculty and staff to address the six new goal themes:

1. **Our Culture** – this theme will build on the work of the Service Excellence

Institute to enhance and sustain a culture of engagement (team co-leaders: Courtney Moreno/ Jane Vitali)

2. **The Patient Experience** - aligned with the EHC Patient and Family-Centered Care Model (team co-leaders: Will Parish/Steven Simoneaux)

3. **Informatics** – develop a structure and strategy for leadership in Radiology Informatics (team co-leaders: Willie Arnold/Anh Duong)

4. **Partnerships** – this theme focuses on strategic internal and external partnerships across our clinical, research, and education missions (team co-leaders: Mike Armstrong/John Oshinski)

5. **Resource Distribution** – how can we optimize our Radiology resources across a distributed system?



(team co-leaders: Deb Baumgarten/Pamela Wimberly)

6. **Standardization** – strategies that will drive standardization of processes to optimize efficiency and quality (team co-leaders: Mimi Newell/Vivian Smith)

Please reach out to the team leaders with your input, ideas, and energy.

Best to all,

Carolyn C. Meltzer, MD, FACR
Chair of Radiology and Imaging Sciences

MESSAGE FROM THE VICE CHAIR FOR RESEARCH

A New Reality is Upon Us

President Wagner gave his State of the University address on October 30. He made two comments that stuck with me that I would like to share. They addressed the changing environment of higher education and health care. One gave a picture of our current situation and the other gave a plan for moving forward.

The pendulum analogy is often used to give the impression of a cyclic nature of things. If we can weather the storm now, then later the pendulum will swing back and we will enjoy good times in the future as we have in the past. In this case President Wagner specifically stated that the pendulum analogy is not apt. It is more like the pendulum swung to one side and got stuck in the mud.

There will be a new economic reality that will be forever different from that past, and we must understand it and learn how to use it to our advantage.

The other picture President Wagner gave illustrated possible alternatives for moving forward. Consider a box that contains the total of Emory's resources. The box is growing at about 1.5% per year. How should we allocate these resources? One idea is to maintain our current programs at current levels – forgoing the opportunity to expand into new areas. The other idea is to critically look at our programs in relation to our peers – we can't be the best in everything. Perhaps we should concentrate



our resources to the areas where we have the greatest chance to make a difference in the world.

I think this later approach is the best way to plan the future of our research program. We should build on our current expertise and any new recruits must enhance existing programs rather than start new ones. Finally, I think we should look for hidden talent amongst our own ranks. I suspect that our clinical efforts are generating great questions that we could and should investigate. Come see me if you need help starting your investigation into one of these questions.

Sincerely,

- John Votaw, PhD,
Vice Chair for Research

AWARDS & RECOGNITION



Arthur Stillman, MD

Professor
Radiology and Imaging Sciences

Society of Hungarian Radiologists

Dr. Stillman was recently named an Honorary Member of the Society of Hungarian Radiologists for his contributions to educating Central Europeans in Cardiac Imaging. He

was a lecturer at The 3rd Central European Conference on Noninvasive Cardiovascular Imaging this past September in Budapest, Hungary. His presentations focused on Noninvasive Cardiovascular Imaging.



Faisal Khosa, MD

Assistant Professor
Radiology and Imaging Sciences

Center for Systems Imaging Pilot Study Discovery Concept Proposal

The Center for Systems Imaging has approved Dr. Faisal Khosa's Pilot Study Application, "Radiation Induced Accelerated Atherosclerosis in Cancer Survivors: An Assessment by MRI" for acquisition of preliminary data.

Also, Dr. Khosa's Discovery Concept Proposal for the Class of 2013 Discovery Phase was reviewed and approved for inclusion in the Discovery Project Database at Emory University.

Diagnostic Radiology Residency

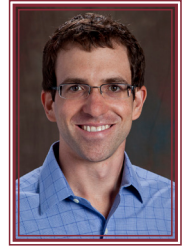


Chris Ho, MD

Assistant Professor
Radiology and Imaging
Sciences

Travis Henry, MD

Assistant Professor
Radiology and
Imaging Sciences



Drs. Ho and Henry were recently appointed as Associate Program Director (Dr. Ho) and Assistant Program Director (Dr. Henry) of the Diagnostic Radiology Residency, joining the leadership team led by Dr. Mark Mullins. They will be actively involved in resident education issues, residency curriculum, ACGME core competencies and the day-to-day activities of the residency.

Merrill's Award



We are pleased to announce the Merrill's Award for September is presented to Lauren Starks. Lauren is an overnight Diagnostic Technologist at Emory University Hospital. She earned the award based on the submission of a Portable Thoracoabdomen exam performed in the ICU. This month our winner chose the gasoline gift card as her prize. Please congratulate her on her exceptional attention to image quality and high standard of patient care.

Remember: you can't be the next Merrill's winner without submitting an image. The committee would love to see more participation from across our Emory campuses. We know those awesome images are out there! Be sure to recognize your own or others' stellar work by submitting a nomination for the Merrill's Award. Blue Merrill's Committee folders are located in each diagnostic work area.

HR Tip

FLU VACCINATION REQUIRED

All Emory University (EU) faculty physicians and EU employees who work in an EHC facility are required to receive the flu vaccination, or complete a medical or religious exemption.

HOW

You must pre-register through employee self service prior to getting your vaccination at <http://leo.cc.emory.edu>

Login

Click "Influenza Vaccine Registration"

Complete and Submit Registration

Go to EHC Flu Marathon event for your FREE vaccination

DETAILS

Visit EHC flu marathon event at

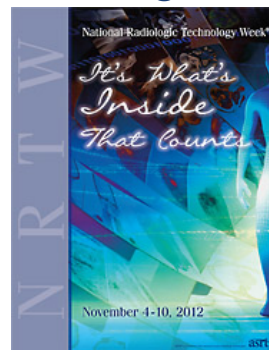
<http://www.ourehc.org/departments/influenza/vaccination-schedule.html> for the schedule located on the left side of the page.

WHEN

Oct. 4th through Dec. 1st, 2012

MUST BE COMPLETED BY 4:00 PM, DECEMBER 12, 2012.

Radiologic Technology Week



Celebrate National Radiologic Technology Week® Nov. 4-10, 2012. The American Society of Radiologic Technologists (www.asrt.org) reminds us that National Radiologic Technology Week® is celebrated annually to recognize the vital work of radiologic technologists across the nation. The celebration takes place each November to commemorate the anniversary of the x-ray's discovery by Wilhelm Conrad Roentgen on Nov. 8, 1895.

The week-long celebration calls attention to the valuable work of RTs in the health care field and the quality of work they perform. Imaging plays an integral role in the medical process and in the lives of millions of patients. Our Department leaders want to take this opportunity to recognize our radiologic technologists for all their hard work, commitment to quality and dedication to care for our patients. Join us in thanking your Radiologic Technologists during this week long event.

IN THE KNOW

Quality Corner

The 2012 EHC Quality Conference

Each year, Emory Healthcare displays its commitment to quality via the EHC Quality Conference, which provides a forum for faculty and staff to showcase their quality improvement work over the past year. This year the conference was held on October 30th, 2012.

Our Department of Radiology and Imaging Sciences has shown significant support for the Quality Conference since its inception three years ago. This year our department had 14 posters accepted and displayed at the conference. We had a very strong presence, as our department alone made up over 25% of all posters. Even more impressive, six of those posters (highlighted in blue) were award-winning! The posters will be on display throughout the Department of Radiology and Imaging Sciences. Congratulations to all – keep up the great quality improvement work.

This year's submissions included:

Quality Improvement in Grady Breast Imaging Department

Kathleen Gundry, Christopher Ho, Anna Holbrook, Ryan Polselli, Joanna Rossi, Hana Khan, Sachin Parikh, Teddy Howard

Reducing Imaging Exam Order-to-Start Turnaround Time for ED Patients at EUH

Gavin McBrearity, Caitlin Motley, Shelley Rosmarin, Deb Smith

Online Protocols for MRI Studies

Ashley Aiken, Bobbie Burrow, Tracy Faber, Cory Ivins, Anh Duong

The Emory Nuclear Medicine Thyroid Cancer Therapy Consult

Valeria Moncayo, Bruce Barron, David Schuster, Raghuvver Halkar, Kimberly Applegate, Jim Fitz

PET/CT: A QI Project to Standardize and Reduce CT Dose Across All Emory PET/CT Scanners

Adam Brown, Jon Nye, David Schuster, James Galt, Phuong-Anh Duong

Retrieval of Prior Breast Images for Comparison to Screening Mammogram Exams

Marsha Rezapour, Melissa Gomez, Diann Reeves

ER Patient Exam Delay at EJCH

Candace Moczarski, John Stefanie

Diagnostic Ultrasound: QI Project to Standardize Exams Across Emory Healthcare

Deborah Baumgarten, Nicole Barrett, Marilyn Dickerson, Susan Reeder, Linda Gunsby, Courtney Coursey Moreno, Kimberly Applegate

Reducing Patient Misidentification Errors in Radiology by Integrating Photographs Obtained at the Point-of-Care of Radiography

Srini Tridandapani, Senthil Ramamurthy, James Provenzale, Mo Salama

Radiology Report Attestations

Karen Boles, Kimberly Applegate, William Torres, Kristen Baugnon

Computer Assisted Coding Test Of Change

Marjorie Sims, Brenda Melton, Anetta Mathis, Mildred Underwood

Transaction Editing System Test Of Change

Neaji Kirk, Mitchell Tulloch, Annmarie Lloyd, RaSheen Sarmiento, Karen Roberts-Lee

Improving Radiology Turnaround Time and ED Length of Stay: No Oral Contrast Abdomen Pelvis Exam (NOCAPE) Protocol

Omari Johnson, Ian Yancey, James Capes, Matthew Keadey, Jessie Knighton, Freddie Swain, Michael Kassin, Courtney Moreno

CT Radiation Dose Modification and Standardization: Utilization of the American College of Radiology Dose Registry

Erica Campbell-Brown, Anh Duong, Hiroumi Kitajima, Jessie Knighton, Brent Little, Kimberly Applegate

We hope to see even more posters at next year's conference!

- Greg Pennington, Senior Manager, Clinical Operations
- Deb Smith, Associate Clinical Administrator

STRIVING FOR EXCELLENCE

The Effects of Change on Staff

Some people may define change as a paradigm shift, transition, evolution, variance or even a metamorphosis. The fact of the matter is regardless of the name, it has an effect on all of us.

Just think, change takes us out of our comfort zone and then what happens? That part of the brain that controls our “flight or fight” kicks into high gear and other emotions creep in: fear, depression, sadness, fatigue and even anger. Perhaps we can do a better job of making change familiar. We have worked on this issue by enhancing communication but once the wheels of change start to spin at a high rate of speed again, communication starts to fade as deadlines become the bigger focus.

As an organization and department, the stress, happiness, and frustration of change has become apparent. I am not sure if anyone has given thought to

the psychological effects of change and how it may affect all of us as we move so rapidly through the acquisitions of sister institutions and personnel changes. Then there is the transfer of new staff from one place to another and with each transfer begins a conflicting thought process from most individuals. Not that they like or dislike anything in particular; but rather the struggle in the brain to change a habitual response to a repetitive task. It’s easier for us to fall back on what is familiar. It not only feels good, but it feels right.

Allow staff members to participate and help create the change. Most will respond favorably to change they help create. Stop selling new ideas; allow others to ask questions in order to work out solutions on their own. So often



I am told of how things once were, “gone are the good ole days” some state. The power of a vision is great and if staff believes a new change will be painful they will automatically resist. One of the biggest barriers to change for most employees is that they have no idea what the organization is trying to achieve. Let’s just put the truth out there so that we can become a team focused on a common goal, otherwise human nature will take over, our anxiety will be heightened.

Best Quote:

Changes have a considerable psychological impact on the human mind. To the fearful it is threatening because it means that things may get worse. To the hopeful it is encouraging because things may get better. To the confident it is inspiring because the challenge exists to make things better.

King Whitney Jr.

- Chrystal Barnes
Director of Imaging
Emory Johns Creek Hospital

RSNA 2012

Emory at RSNA

Each year Emory is strongly represented at the Radiological Society of North America (RSNA). Residents, fellows and faculty continue this tradition through their involvement in educational exhibits, scientific papers and course presentations at the 98th Annual Scientific Meeting.

The conference will be held the week following the Thanksgiving Holiday, November 25th - 30th.

Please take a moment to recognize those who, through hard work and dedication, have been invited to share their knowledge as experts of radiology.

ANNUAL EMORY RADIOLOGY AND IMAGING SCIENCES ALUMNI RECEPTION

All radiology professionals who have been touched by Emory during their career are invited to attend the Alumni Reception in Chicago, during the week of RSNA.

Monday, November 26, 2012
6:30 p.m. to 8:30 p.m.

InterContinental Chicago Hotel
Camelot Ballroom
505 North Michigan Avenue
Chicago, IL 60611

The evening will include light hors d’oeuvres and an opportunity to network with your Emory colleagues. Please visit the current events page of the www.radiology.emory.edu website for all up-to-date information.

Please RSVP by November 19, 2012 to Alaina Shapiro: radiologycomm@emoryhealthcare.org or 404.712.5497

RSNA Presentations

Saturday

Time	Location	Type	Title	Directors
1:30- 5:30	E253CD	Pre Meeting Sessions	SESSION: RSNA/ARR Study Section Reviewers Workshop: What it Takes to be an Expert Reviewer for the NIH—The Peer Review Process Demystified	Elizabeth Krupinski Carolyn Meltzer

Sunday

Time	Location	Type	Title	Presenter(s)
10:45- 12:15	E353B	Scientific Paper	Genitourinary (Optimizing Detection of Renal Stones)	Joel Platt Deborah A. Baumgarten
10:45- 12:15	N226	Scientific Paper	Neuroradiology (Acute Stroke Advanced Techniques)	Ramon Gonzalez Mark Mullins
11:45- 11:55	S504CD	Scientific Paper	Evaluation of a Hand-held Optical Imaging Device for Tumor Resection	James Provenzale Aaron Mohs Michael Mancini Corey Saba Elizabeth Howerth Karen Cornell Shuming Nie
2:00-3:30	N229	Refresher/Informatics	Proton Radiotherapy: Is It Worth the Hype?	John Breneman Jeff M. Michalski Minesh P. Mehta
2:00-3:30	E451A	Refresher/Informatics	Sinonasal Imaging: A Practical Approach - Sinonasal Infections and Inflammation	Patricia A. Hudgins

RSNA 2012

Emory at RSNA

RSNA Presentations

Monday

Time	Location	Type	Title	Presenter(s)
8:30-10:00	RC232	Refresher/Informatics	Managing Multiple Accountabilities	Carolyn Meltzer
10:30-12:00	E353A	Scientific Paper	Gastrointestinal (GI Tract Imaging)	Meghan G. Lubner Brian C. Lucey William E. Torres
11:00-11:10	E451B	Scientific Paper	Predicting Genomic Features of Glioblastomas by Quantitative Analysis of Diffusion-weighted and Diffusion-Tensor Imaging	Scott Nyshin Hwang Chad Holder Rajan Jain Max Wintermark Rivka Colen Justin Kirby Erich Huang John B. Freymann Carl Jaffe Adam E. Flanders
12:15 - 12:45	n/a	Quality Storyboards	Feasibility of a High-Performance Human-Computer Search Interface for Patient-centered Radiology Ordering Based on Aggregation and Localization of the ACR Appropriateness Criteria	Anthony Fotenos Ryan Woods Paras Khandheria Michael Cohen Paul G. Nagy
12:15 - 1:15	Lakeside Learning Center	Scientific Paper	Nuclear Medicine Lunch Hour CME Posters 18F-FDG PET-CT Imaging of Reversible Progressive Encephalopathy Treated with Zolpidem	Ivan Dequesada David M. Schuster James Galt
12:15 - 1:15	Lakeside Learning Center	Scientific Paper	Nuclear Medicine Lunch Hour CME Posters Imaging of Reversible Progressive Encephalopathy Treated with Zolpidem	Ivan Dequesada David M. Schuster James Galt
3:00-4:00	S403A	Scientific Paper	Physics (Non-conventional CT Imaging) Spectrum of Noise Equivalent Quanta NEQ(k) – Differential Phase Contrast CT vs Conventional CT	Xiangyang Tang Yi Yang Shaojie Tang
3:00-4:00	Arie Crown Theater	Scientific Paper	Breast Imaging (MRI: Uses in Newly Diagnosed Breast Cancer) Does Preoperative MRI Workup Affect Mastectomy Rates and/or Re-excision Rate in Patients with Diagnosed Breast Carcinoma? A Retrospective Review	Bhavika Patel Samuel J. Galgano Zhibo Wang Zhengjia Chen Carl D'Orsi
3:30 - 6:00	S406A	Multisession Courses	Cardiac CT Mentored Case Review: Part IV (In Conjunction with the North American Society for Cardiac Imaging) (An Interactive Session)	Arthur E. Stillman Frank Rybicki III
4:30-6:00	S404AB	Multisession Courses	Special Interest Session: Supporting Radiology Research: Imaging Cores, Faculty Development, and Finances	Mitchell Schnall John R. Votaw Elizabeth Krupinski Michael Knopp

Tuesday

Time	Location	Type	Title	Presenter(s)
10:30 - 2:00	S405AB	Series Courses	Proton MRI in the Evaluation of Pulmonary Sarcoidosis: Comparison to HRCT	Jonathan Chung Gongyoung Jin Atsushi Nambu Brent Little Demitry Kazlouski Michael Ulrich Puderbach Jürgen Biederer David Lynch
12:15- 12:45	Lakeside Learning Center	Scientific Paper	Breast Imaging Lunch Hour CME Posters	Karen S. Johnson Mary Soo Anna Holbrook Toma Omonuwa Jay Baker
3:00 - 4:00	N229	Scientific Paper	Neuroradiology/Head and Neck (ENT Development and TMJ)	Lisa Lowe Ashley Aiken
3:20 -3:30	N226	Scientific Paper	Neuroradiology (Brain Perfusion) Comparison of CT Perfusion Deconvolution Algorithms and Arterial Input Function Placement in Estimation of Perfusion Parameters in Middle Cerebral Artery Stroke	Seena Dehkharghani Scott Hwang Andrew Nicholson Alireza Noorian Kohsuke Kudo
3:00 - 4:00	S502AB	Scientific Paper	Cardiac (Coronary CTA/MR III)	James P. Earls Srini Tridandapani Hajime Sakuma
3:00 - 4:00	S505AB	Scientific Paper	Nuclear Medicine (GU, GI, Endocrine) Improved Localization of GI Bleeding: Software for Fusion and Viewing of Planar Dynamic Radiolabeled RBC Scintigraphy with Multiplanar CT	David M. Schuster Tracy L. Faber Jonathon Nye John R. Votaw Hyun S. Kim Roger S. Williams Kathryn Witkowski Bruce Barron James Galt
4:30 - 6:00	E264	Refresher/Informatics	US-guided Interventional Breast Procedures (Hands-on Workshop)	Carl D'Orsi
5:00-6:00	Lakeside Learning Center	Scientific Paper	Cumulative Radiation Exposure of Hospitalized Patients due to Diagnostic Imaging and Image-guided Procedures	Arielle C Lutterman Courtney Coursey Jian Kang William C. Small Pardeep Mittal Kimberly E. Applegate

Wednesday

Time	Location	Type	Title	Presenter(s)
8:30- 12:00	Arie Crown Theater	Series Courses	Breast Series: Emerging Technologies in Breast Imaging	Michael Cohen John Lewin
8:30- 10:00	RC523	Minicourse	Minicourse: Current Topics in Medical Physics—Clinically Focused Physics Education: Principles to Practice	Perry Sprawls
10:30 - 12:00	S504CD	Scientific Paper	ISP: Molecular Imaging (Oncology III) Association of Synthetic Amino Acid Radiotracer Uptake with mRNA Expression of Transporter Genes in Prostate Carcinoma	David Schuster Osunkoya Adebayo Mark Goodman Rianot Amzat Pooneh Taleghani Raghuvver Halkar Bital Savir-Baruch Andrew Young Qiqin Yin-Goen Shuntaro Oka Carlos Moreno
12:15 - 1:15	Lakeside Learning Center	Scientific Paper	Molecular Imaging Lunch Hour CME Posters Imaging Quality of F-18-FDG PET/CT in the Inpatient vs Outpatient Setting	Xuexian Yan Yanli Zhou S. Ramisa Ehsan Raghuvver K. Halkar Kimberly E. Applegate David Schuster
1:30-6:00	S405AB	Scientific Paper	Targeted Image-guided Intraarterial Delivery of Novel Drug Loaded Iron Oxide Nanoparticles to Tumors in the VX2 Rabbit Liver Cancer Model	Hyun S. Kim Taoreed Lawal Veronica Prieto Jing Huang Liya Wang Hui Mao
3:00- 4:00	S502AB	Scientific Paper	Cardiac (Coronary CT/MR IV)	Jill E. Jacobs Srini Tridandapani
3:00- 4:00	S504AB	Scientific Paper	ISP: Cardiac (Dual Energy) Cardiac Keynote Speaker: Monochromatic CT	Xiangyang Tang

RSNA 2012

RSNA Presentations

Thursday

Time	Location	Type	Title	Presenter(s)
8:30 - 12:00	S502AB	Series Courses	Cardiac Series: Clinical Trials Update	Arthur E. Stillman Pamela K. Woodard Antoinette Gomes
10:30 - 12:00	N227	Scientific Paper	Acoustic Noise During Interventional MRI Approaches Mandated 8-Hour Exposure Limits	Hiroumi Kitajima Kelly Young Bobbie Burrow John N. Oshinski Sherif Nour
10:30 - 12:00	S404AB	Scientific Paper	Physics (CT Reconstruction)	Xiangyang Tang Bruno Man
12:15 - 1:15	Lakeside Learning Center	Scientific Paper	Musculoskeletal Lunch Hour CME Posters Imaging Quality of F-18-FDG PET/CT in the Inpatient vs Outpatient Setting	Xuexian Yan Yanli Zhou S. Ramisa Ehsan Raghuvveer K. Halkar Kimberly E. Applegate David M. Schuster
12:15 - 1:15	Lakeside Learning Center	Scientific Paper	Musculoskeletal Lunch Hour CME Posters Validity of Shoulder Cross-sectional Imaging for Glenoid Version Measurements	Gulshan Sharma Melissa Kang Paul Harkey Douglas D. Robertson
4:30 - 6:00	S402AB	Refresher/ Informatics	The Aging Radiologist: How to Cope, When to Quit (Sponsored by the RSNA Professionalism Committee) (An Interactive Session)	Donald Bachman Stephen Chan Bruce Barron William Casarella Robert Schmidt Jack Melamed

Friday

Time	Location	Type	Title	Presenter(s)
8:30 - 10:00	S405AB	Refresher/ Informatics	Gastrointestinal: Imaging the Postoperative Patient-Bariatric Surgery	Courtney Coursey
10:30-12:00	E450B	Scientific Paper	Breast Imaging (Interventional Techniques and Radiology/Pathology Correlation)	Mary S. Newell Phoebe E. Freer
10:30-12:00	S403B	Scientific Paper	Physics (Quantitative Imaging III)	John Aarsvold

Educational Exhibits

Located In The Lakeside Learning Center, Hall D; South Building, Hall A; and North Building, Hall B
 Sunday 8:00 AM - 6:00 PM~ Monday - Thursday 7:00 AM - 10:00 PM~ Friday 7:00 AM - 12:45 PM

Title

- Image Interpretation Exhibit
- Head and Neck Emergencies and MRI: A 2012 Update
- Magnetic Resonance Imaging of Cystic Hepatic and Biliary Lesions
- Beyond the Breast: Important Extramammary Findings on Breast Imaging
- Bad Bile: Magnetic Resonance Imaging of Biliary Malignancies
- Resident Signoff: Monitoring Night Call and Closing the Loop
- DaTscan: A Review of the Concept, Protocol and Imaging
- Lesions of the Clivus and Central Skull Base: "Pearls and Pitfalls"
- When Right Goes Wrong
- Arch Madness: Spectrum of Aortic Arch Anomalies That May Present in Adulthood
- Pitfalls of I-131 Whole Body Scans in Thyroid Cancer: The Utility of Adding SPECT CT
- The Cancer Genome Atlas (TCGA) Radiology Initiative for Image Genomic Mapping in Glioblastoma Multiforme: The TCGA Glioma Phenotype Research Group
- Pancreatic Neoplasms: Correlation of MR Imaging Features With Pathologic Classification
- Interactive Workshop Cross Sectional Imaging Assessment of Right Upper Quadrant Pain: Mimics of Acute Cholecystitis and the Impact in the Emergency Daily Practice
- Post-Transplant Lymphoproliferative Disease (PTLD): Imaging Findings of a Poorly Recognized and Not So Rare Malignant Entity
- Post Liver Transplant Complications: From Doppler-Ultrasound Screening to Cross Sectional and Vascular-interventional Imaging
- Angiotensin Converting Enzyme (ACE) Inhibitor Induced Visceral Angioedema and the Acute Abdomen: Cross-sectional Imaging Correlates
- Mesenteric Pathology on MRI: A Review of Frequently Encountered Abnormalities
- CT Appearance and Classification of Heterotopic Bone Formation with the Use of rhBMP2 for Lumbar Interbody Fusion Procedures
- Innovative Techniques for Radiation Dose Reduction in Abdominal-pelvic CT
- Application of Diffusion-weighted MR Imaging in Prostate Cancer
- Axial Loading Injuries in the Multitrauma Patient. A Review of the Most Common Injuries Seen from Head to Toe
- Interactive Workshop Imaging Assessment of HCC: A Case Driven Practice Suite to Properly Direct A Multidisciplinary Interventional Radiology Practice
- Sensitivity, Specificity, ROC Curves, Positive and Negative Predictive Value: The Graphic Novel

Presenter(s) and Co-Author(s)

- Ella A. Kazerooni | Deborah A. Baumgarten | Jonathan H. Burdette | Marilyn J. Goske | Levon N. Nazarian | Cornelia Schaefer-Prokop
- Michael Lubarsky | Kristen Baugnon | Ashley Aiken | Jason Doye
- Shannon Hill | Paul Doye | John Chenevey | Courtney Coursey | Pardeep Mittal
- Shannon Hill | Christopher Ho | Mary S. Newell
- Paul Doye | Shannon Hill | Courtney Coursey | Pardeep Mittal
- Collin Torok | Paul G. Nagy | Michael Cohen
- Ivan Dequesada | David Brandon
- Michael Lubarsky | Kristen Baugnon | Ashley Aiken
- Mark Green | Travis S. Henry | Brent Little | Neil Amin | Clinton Jokerst | Sanjeev Bhalla
- Adam Prater | Neil Amin | Mark Green MD | Travis S. Henry | Sanjeev Bhalla
- Valeria Moncayo | Raghuvveer K. Halkar | Bruce Barron
- Wintermark | Justin Kirby | Daniel L. Rubin | Adam E. Flanders
- Jianhai Li | William C. Small | Krizstina Hanley | Pardeep Mittal
- Juan Camacho | Peter Harri | Daniel Monroy | Adam Zorn | Diego Aguirre | Pardeep Mittal | William E. Torres
- Juan Camacho | Daniel Russell Jr | Mauricio Moreno | Diego Aguirre | Pardeep Mittal | William Torres
- Juan Camacho | Juan Telleria | Mauricio Moreno | Diego Aguirre | Pardeep Mittal | William Torres
- Soham Mahadevia | Pardeep Mittal
- Aalok Turakhia | Pardeep Mittal
- Syed Ali | Claude Pierre-Jerome | Michael R. Terk
- Jianhai Li | William C. Small | Pardeep Mittal
- Jianhai Li | William C. Small | Pardeep Mittal
- Jason Weiden MD | Justin Rafael MD
- Juan Camacho | Thomas Loehfelm | Daniel Monroy | Diego Aguirre | Pardeep Mittal | William E. Torres
- Stefan Tigges | Tze Wey Loong

NEW FACES & APPOINTMENTS



Xinyao Guo, MD, PhD
MR Research Specialist

Dr. Guo worked as a radiologist at a hospital in Xi'an, China and as a research scientist at Cincinnati Children's Hospital Medical Center. In addition to her MD, she also has a Masters Degree in Medical Imaging. She has obtained a PhD in medical Imaging with research in Magnetoencephalography (MEG) of childhood healthy brain and brain disorders, such as cerebral palsy and migraine.



Tiffany Whitley
Health Educator

Tiffany gained her Associates of Applied Science in Diagnostic Radiology in 2009 from Griffin Technical College. In 2011, she received a Bachelors of Medical Science in Medical Imaging from Emory University. Tiffany has practiced General Diagnostic Radiology since 2008 and MRI since 2010. She is currently pursuing her Masters in Radiologic Sciences in Education.

Emergency Radiology Fellow



Vijay Shridhar Pande, MD
Medical School: Indira Gandhi Medical College
Nagpur India

Residency: Grant Medical College
Bombay India

Department of Radiology and Imaging Sciences Holiday Party

Friday, December 7th, 2012

Time: 7:00 - 11:00 pm

Park Tavern

500 10th Street NE
Atlanta GA



Complimentary valet parking and coat check will be available at the front entrance of Park Tavern. Each guest will receive two drink tickets upon check-in at the event. A cash bar will also be offered. Hors d'oeuvres and desserts will be served throughout. Additionally, the entire venue, including the ice skating rink and photo booths, will be open exclusively to our Department.

Please RSVP by Friday, November 30, 2012.

For additional information, contact Alaina Shapiro at (404) 712-5497 or radiologycomm@emory.edu

Look for a new issue of the Rad Report
the first full week of December.

Radiology Calendar

Week of November 12, 2012

Wed., November 14 –
Grand Rounds - Gary Becker, MD
*Maintenance of Certification:
Why now and Why You?*

RIPS- John Aarsvold, PhD
*The Volume of Interest of a GE
530c Cardiac SPECT*

Week of November 19, 2012

Wed., November 21 –
No Grand Round
No RIPS Conferences -
Thanksgiving Holiday

Week of November 26, 2012

Wed., November 28 –
No Grand Round - RSNA Week

RIPS- Kaundinya Gopinath, PhD
*Functional Connectivity of Category
Selective Areas in Occipitotemporal Cortex*

Week of December 3, 2012

Wed., December 5 –
Grand Rounds - *Sprawls Lecture*
Richard E. Carson, PhD
PET Imaging in Neuroscience and Diabetes

RIPS- Richard E. Carson, PhD
*High Resolution Human Brain
PET Imaging with the HRRT:
Challenges and Opportunities*

For times & locations visit the website:
www.radiology.emory.edu